



## Installation Instructions & Owner's Manual

### UF Series

Twin Membrane Filtration System



**Model** CCUF-844TW

# TABLE OF CONTENTS

|  |    |
|--|----|
| <b>Pre-Installation Instructions for Dealers</b> ..... | 3  |
| <b>Bypass Valve</b> .....                              | 4  |
| <b>Installation</b> .....                              | 5  |
| <b>Programming Procedures</b> .....                    | 7  |
| <b>Start-up Instructions</b> .....                     | 9  |
| <b>Operating Displays and Maintenance</b> .....        | 10 |
| <b>Troubleshooting Guide</b> .....                     | 12 |
| <b>Service Instructions</b> .....                      | 17 |
| <b>Replacement Parts</b> .....                         | 20 |
| <b>Installation Fitting Assemblies</b> .....           | 27 |
| <b>Specifications</b> .....                            | 30 |
| <b>Warranty</b> .....                                  | 31 |
| <b>Quick Reference Guide</b> .....                     | 32 |

## **YOUR WATER TEST**

Hardness \_\_\_\_\_ gpg  
Iron \_\_\_\_\_ ppm  
pH \_\_\_\_\_ number  
\*Nitrates \_\_\_\_\_ ppm  
Manganese \_\_\_\_\_ ppm  
Sulfur \_\_\_\_\_ yes/no  
Total Dissolved Solids \_\_\_\_\_

\*Over 10 ppm may be harmful for human consumption.  
Water conditioners do not remove nitrates or coliform bacteria,  
this requires specialized equipment.

## **STARTUP DATA**

Installation Date \_\_\_\_\_  
Installation Dealer \_\_\_\_\_  
Separate Source Reg. Kit Installed \_\_\_\_\_  
Volume Between Flushing (gallons) \_\_\_\_\_  
Time Between Regeneration (hrs) \_\_\_\_\_

Your CustomCare UF Filtration system is a precision built, high quality product. This unit will deliver quality water for many years to come, when installed and operated properly. Please study this manual carefully and understand the cautions and notes before installing and operation. This manual should be kept for future reference. If you have any questions regarding your system, contact your local dealer or Water-Right at the following:

**Water-Right, Inc.**

**1900 Prospect Court • Appleton, WI 54914**

**Phone: 920-739-9401 • Fax: 920-739-9406**

## PRE-INSTALLATION INSTRUCTIONS FOR DEALERS

The manufacturer has preset the water treatment units sequence of cycles, cycle times, salt dosage and salt refill time, if used. The installing dealer should read this guide thoroughly before set up, installation, and operation of equipment. If there are any question regarding the operation of UF-835 please consult the manufacturer.

**The dealer** should read this page and guide the installer regarding regeneration, service alarm, and programming settings prior to installation.

**For the installer**, the following must be used:

- Set the following Installer Settings
  - Gallon Setting
  - Every Day Regeneration
  - Service Alarms and Alarm Times (if desired)
- Read Normal Operating Displays
  - Set Time of Day
- Read Installation Instructions
  - Allow Space for Membrane Removal
  - Installation must be in compliance with all state and local regulations

**For the homeowner**, please read Programming Procedures and Operating Displays and Maintenance sections.

During operation, the normal user display is *time of day* and *gallons per minute*. *Flow Rate*, *Vacation Mode*, *Capacity Remaining* and *Days to a Regeneration* are optional displays but are not normally used. (Vacation Mode is used only when there will be no water usage for an extended period of time. Once 50 gallons of water is used, the unit will automatically regenerate that night and resume normal operation.) Each of these can be viewed by pressing **NEXT** to scroll through them. When stepping through any programming, if no buttons are pressed within 5 minutes, the display returns to a normal user display. Any changes made prior to the 5 minute time out are incorporated. To quickly exit any Programming, Installer Settings, etc., press **SET CLOCK**. Any changes made prior to the exit are incorporated.

### Ultra Filtration Flushing Schedule

The UF Series Filter is factory preset to backwash every day at midnight. This is dependent on the quality of water being treated and may be adjusted by the installing dealer based on the water quality. A post ultra-filtration pressure tank may be installed to ensure a sufficient flow of water and pressure to the home during a flush cycle.

**IMPORTANT:** If a post pressure tank is used a check valve may be required to allow for treated water regeneration. In this case an expansion tank should be installed to account for thermal expansion. See drawing in the back of this manual.

#### Default Factory Setting

Standard Unit with or without Separate Source Regeneration (SSR)

Flush Frequency: Every Day

Backwash Flush Duration: 2 Min. at 5.3 GPM

Rinse Duration: 1 Min. @ 5.3 GPM

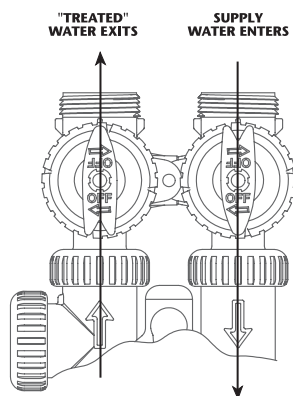
## BYPASS VALVE

The bypass valve is typically used to isolate the control valve from the plumbing system's water pressure in order to perform control valve repairs or maintenance. The 1" full flow bypass valve incorporates four positions, including a diagnostic position that allows a service technician to have pressure to test a system while providing untreated bypass water to the building. Be sure to install bypass valve onto main control valve, before beginning plumbing. Or, make provisions in the plumbing system for a bypass. The bypass body and rotors are glass-filled Noryl® and the nuts and caps are glass-filled polypropylene. All seals are self-lubricating EPDM to help prevent valve seizing after long periods of non-use. Internal "O" Rings can easily be replaced if service is required.

The bypass consists of two interchangeable plug valves that are operated independently by red arrow shaped handles. The handles identify the direction of flow. The plug valves enable the bypass valve to operate in four positions.

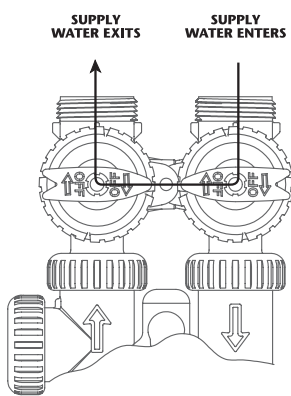
1. **NORMAL OPERATION POSITION:** The inlet and outlet handles point in the direction of flow indicated by the engraved arrows on the control valve. Water flows through the control valve for normal operation of a water softener or filter. During the regeneration cycle this position provides regeneration water to the unit, while also providing untreated water to the distribution system (**Fig. 1**).
  2. **BYPASS POSITION:** The inlet and outlet handles point to the center of the bypass. The system is isolated from the water pressure in the plumbing system. Untreated water is supplied to the building (**Fig. 2**).
  3. **DIAGNOSTIC POSITION:** The inlet handle points toward the control valve and the outlet handle points to the center of bypass valve. Untreated supply water is allowed to flow to the system and to the building, while not allowing water to exit from the system to the building (**Fig. 3**). This allows the service technician to test the unit and perform other functions without disrupting the water going to the building.
- NOTE:** The system must be rinsed before returning the bypass valve to the normal position.
4. **SHUT OFF POSITION:** The inlet handle points to the center of the bypass valve and the outlet handle points away from the control valve. The water is shut off to the building. The water treatment system will depressurize upon opening a tap in the building. A negative pressure in the building combined with the unit being in regeneration could cause a siphoning to the building. If water is available on the outlet side of the unit, it is an indication of water bypassing the system (**Fig. 4**) (i.e. a plumbing cross-connection somewhere in the building).

### NORMAL OPERATION POSITION



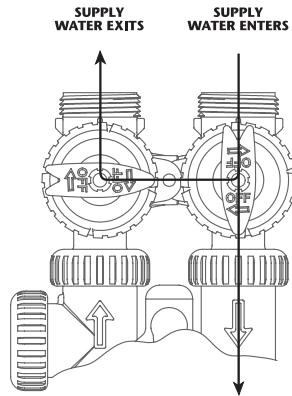
**FIGURE 1**

### BYPASS POSITION



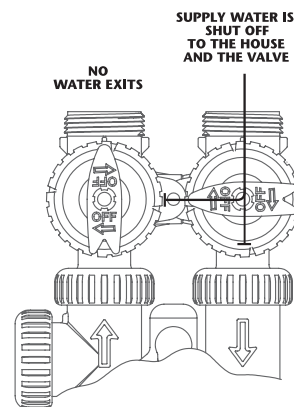
**FIGURE 2**

### DIAGNOSTIC POSITION



**FIGURE 3**

### SHUT OFF POSITION



**FIGURE 4**

# INSTALLATION

## GENERAL INSTALLATION & SERVICE WARNINGS

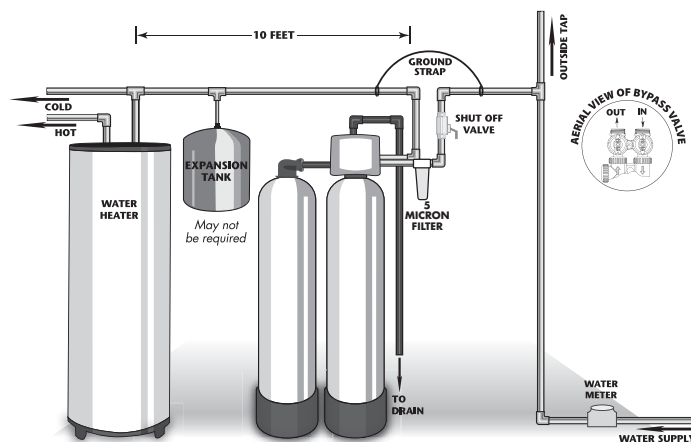
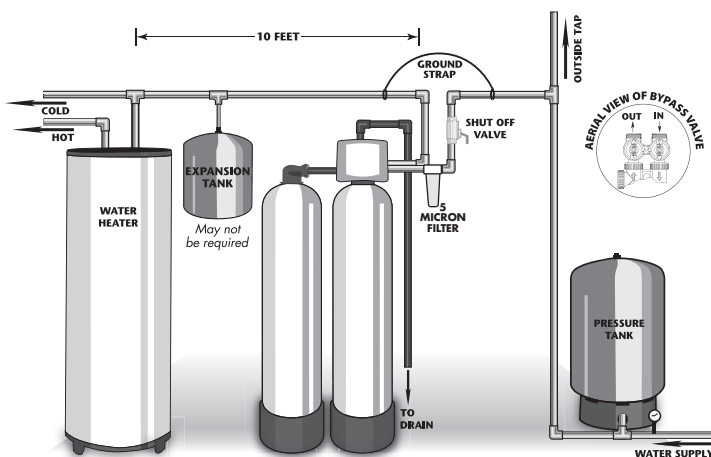
The control valve, fittings and/or bypass are designed to accommodate minor plumbing misalignments. There is a small amount of “give” to properly connect the piping, but the water softener is not designed to support the weight of the plumbing.

Do not use Vaseline, oils, other hydrocarbon lubricants or spray silicone anywhere. A silicone lubricant may be used on black “O” Rings, but is not necessary. *Avoid any type of lubricants, including silicone, on red or clear lip seals.*

*Do not use pipe dope or other sealants on threads.* Teflon® tape must be used on the threads of the 1” NPT inlet and outlet, the brine line connection at the control valve, and on the threads for the drain line connection. Teflon® tape is not used on the nut connections or caps because “O” Ring seals are used. The nuts and caps are designed to be unscrewed or tightened by hand or with the special plastic Service Wrench, #CV3193-02. If necessary pliers can be used to unscrew the nut or cap. Do not use a pipe wrench to tighten nuts or caps. *Do not place screwdriver in slots on caps and/or tap with a hammer.*

## SITE REQUIREMENTS

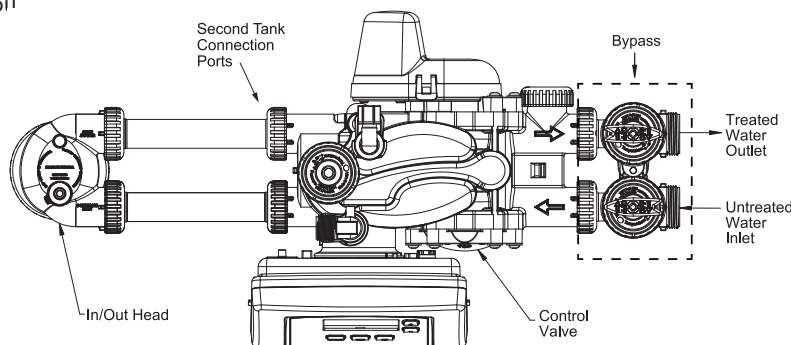
- Water pressure – 30-100 psi
- Water temperature – 33-100°F (0.5-37.7°C)
- Electrical – 115/120V, 60Hz uninterrupted outlet
- Current draw is 0.5 amperes
- The plug-in transformer is for dry locations only
- The tank should be on a firm level surface



## WELL WATER INSTALLATION

## MUNICIPAL INSTALLATION

- The distance between the drain and the water conditioner should be as short as possible (see step 8).
- Do not install any water conditioner with less than 10 feet of piping between its outlet and the inlet of a water heater.
- Do not locate unit where it or its connections (including the drain and overflow lines) will ever be subjected to room temperatures under 33°F.
- Do not subject the tank to any vacuum, as this may cause an “implosion” and could result in leaking. If there is a possibility a vacuum could occur, please make provision for a vacuum breaker in the installation.
- INLET/OUTLET PLUMBING:** Be sure to install Bypass Valve onto main control valve before beginning plumbing. **(See installation picture to right. Be sure bypass is connected to treated water inlet and outlet.)** Make provisions to bypass outside hydrant and cold hard water lines at this time. Install an inlet shutoff valve and plumb to the unit's bypass valve inlet located at the right rear as you face the unit. There are a variety of installation fittings available. They are listed under the Installation Fitting Assemblies section. When assembling the installation fitting package (inlet and outlet), connect the fitting to the plumbing system first and then attach the nut, split ring and “O” Ring. Heat from soldering or solvent cements may damage the nut, split ring or “O” Ring. Solder joints should be cool and solvent cements should be set before installing the nut, split ring and “O” Ring. Avoid getting solder flux, primer, and solvent cement on any part of the “O” Rings, split rings, bypass valve or control valve.



## INSTALLATION

If the building's electrical system is grounded to the plumbing, install a copper grounding strap from the inlet to the outlet pipe. Plumbing must be done in accordance with all applicable local codes.

7. **INSTALLING GROUND:** To maintain an electrical ground in metal plumbing of a home's cold water piping (such as a copper plumbing system), install a ground clamp or jumper wiring.

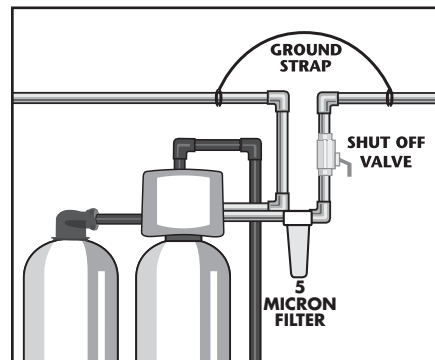
**NOTE:** If replacing an existing filter, also replace the ground clamps/wire. If removing a filter, replace the piping with the same type of piping as the original to assure plumbing integrity and grounding.

8. **DRAIN LINE:** First, be sure that the drain can handle the backwash rate of the system. Solder joints near the drain must be done prior to connecting the drain line flow control fitting. Leave at least 6" between the drain line flow control fitting and solder joints. Failure to do this could cause interior damage to the flow control. Install a 1/2" I.D. flexible plastic tube to the Drain Line Assembly or discard the tubing nut and use the 3/4" NPT fitting for rigid pipe (recommended).

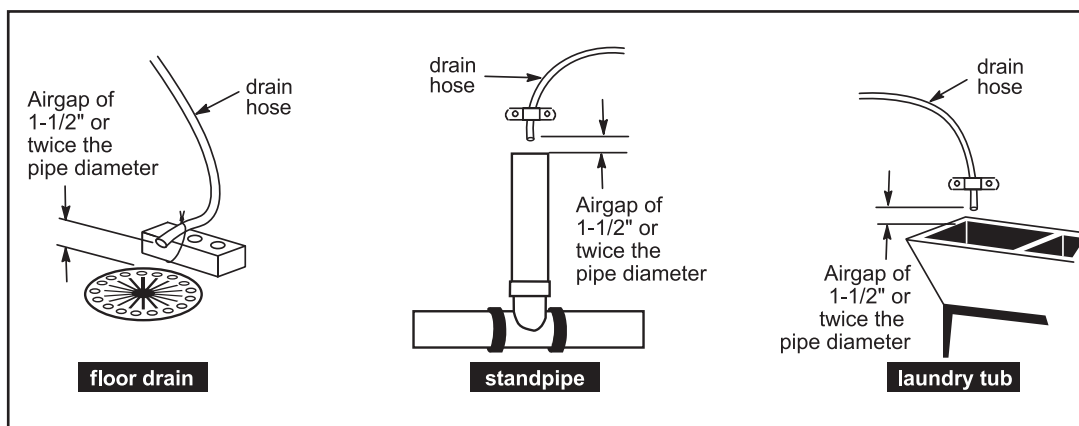
**If the backwash rate is greater than 5.3 gpm, use a 3/4" rigid drain line.**

Where the drain line is elevated but empties into a drain below the level of the control valve, form a 7" loop at the discharge end of the line so that the bottom of the loop is level with the drain connection on the control valve. This will provide an adequate anti-siphon trap. Piping the drain line overhead <10 ft. is normally not a problem. Be sure adequate pressure is available (40-60 psi is recommended). Where the drain empties into an overhead sewer line, a sink-type trap must be used. Run drain tube to its discharge point in accordance with plumbing codes. Pay special attention to codes for air gaps and anti-siphon devices.

**NOTE:** Drain line nut will not be supplied for units having a backwash rate greater than 7 gpm.



**CAUTION:** Never insert a drain line into a drain, sewer line, or trap. Always allow an air gap of 1-1/2" or twice the pipe diameter, whichever is greater, between the drain line and the wastewater to prevent the possibility of sewage being back-siphoned into the softener.



**TYPICAL DRAIN LINE INSTALLATIONS**

# PROGRAMMING PROCEDURES

### 1. Set time of day:

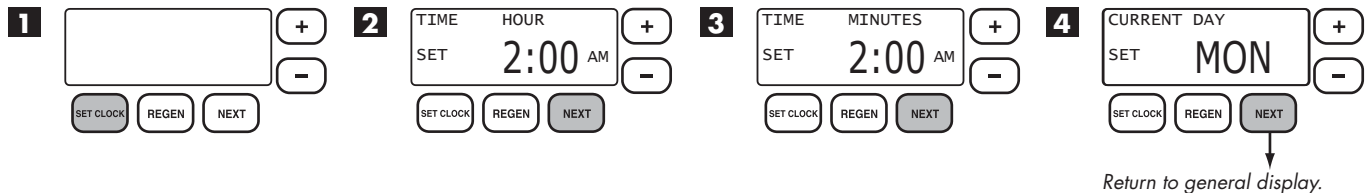
Time of day should only need to be set after extended power outages or when daylight saving time begins or ends. If an extended power outage occurs, the time of day will flash on and off indicating that the time should be reset.

**STEP 1** – Press **SET CLOCK**.

**STEP 2 – CURRENT TIME (HOUR):** Set the hour of the day using **+** or **–** buttons. AM/PM toggles after 12. Press **NEXT** to go to step 3.

**STEP 3 – CURRENT TIME (MINUTES):** Set the minutes using **+** or **–** buttons. If it is desired to back up to the previous step press **REGEN** button once. Press **NEXT** to go to step 4.

**STEP 4 – CURRENT DAY:** Set the day of the week using **+** or **–** buttons. Pressing **NEXT** will exit **SET CLOCK** and return to the general operating display.



## 2. Programming:

**NOTE:** The manufacturer has preset the control valve to back flush once a day, with a 300 Gallon Setting between regenerations. If 300 gallons are used the unit will regenerate at the next regeneration time.

**STEP 1** – Press **NEXT** and **+** simultaneously for 3 seconds.

**STEP 2 – DAYS BETWEEN REGENERATION (DAY OVERRIDE):** The manufacturer has factory set OFF as the default. When set to “OFF”, regeneration initiation is based solely on gallons used. If any number is set (allowable range from 1 to 28), a regeneration initiation will be called for on that day even if a sufficient number of gallons were not used to call for a regeneration.

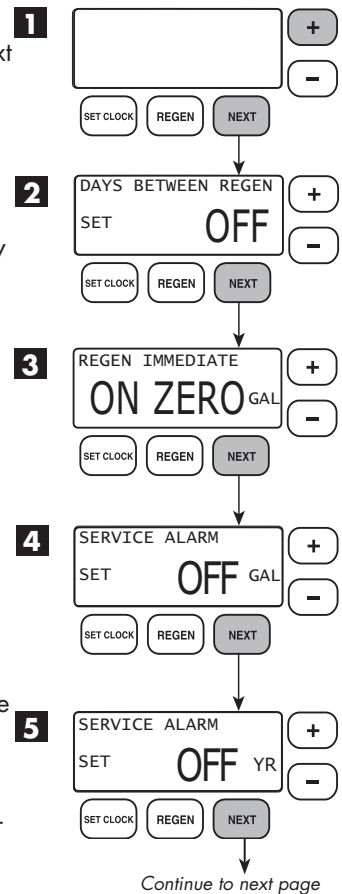
Set Day Override using **+** or **-** buttons:

- set number of days between regeneration (1 to 28); or
- set to "OFF"

**STEP 3 – IMMEDIATE REGENERATION:** The manufacturer has set the regeneration to occur when zero gallons remain. When this occurs, the standby tank will switch into service and provide treated water while the tank requiring regeneration will start this process.

**STEP 4 – SERVICE ALARM GALLONS:** The manufacturer has factory set “OFF” as the default. This feature is used to signal service into the future. This is typically set by the installing dealer to warn homeowner that service is required after a preset number of gallons have been consumed. If the feature is active, a specific gallon amount will appear.

**STEP 5 – SERVICE ALARM TIME:** The manufacturer has factory set “OFF” as the default. This feature is used to signal service into the future. This is typically set by the installing dealer to warn homeowner that service is required after a period of time has passed. If the feature is active, a specific number of days will appear.



## PROGRAMMING PROCEDURES

**STEP 6 – ALARM BUZZER:** The manufacturer has factory set “OFF” as the default. An alarm will sound (at the indicated time) after a regeneration, if there is no salt (optional) or if another error has occurred. Turn the alarm “OFF” or “ON” using the **+** or **–** buttons. Press **NEXT**.

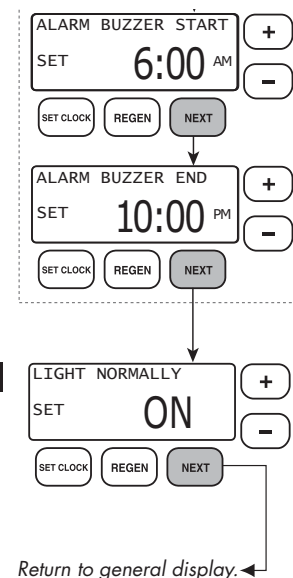
**NOTE:** This feature allows you to program the time in which the alarm buzzer will sound, permitting the installer to pick a time when the owner will be home or awake to hear it.

**Setting Alarm Buzzer Start Time:** Press **+** or **–** button to select the correct hour the buzzer is to start sounding. Be sure to also set AM or PM as necessary. (Default is set to 6:00 a.m.) Press **NEXT**.

**Setting Alarm Buzzer End Time:** Press **+** or **–** button to select the correct hour the buzzer is to stop sounding in the day. Be sure to also set AM or PM as necessary. (Default is set to 10:00 p.m.) Press **NEXT**.

**STEP 7 – DISPLAY BACKLIGHT:** The manufacturer has factory set “ON” as the default. Turn the light “OFF” or “ON” using the **+** or **–** buttons. “OFF” will turn display backlight off after five minutes of keypad inactivity.

Press **NEXT** to exit installer programming.





The system regeneration sequence for a Standard Installation configuration is in the following order. To change the cycle order, consult the unit's Dealer Manual or contact the manufacturer.

**Standard Installation Regeneration Sequence:**

1. Backwash (2 minutes)
2. Rinse (1 minute)

***The system is now ready for filling with water and for testing.***

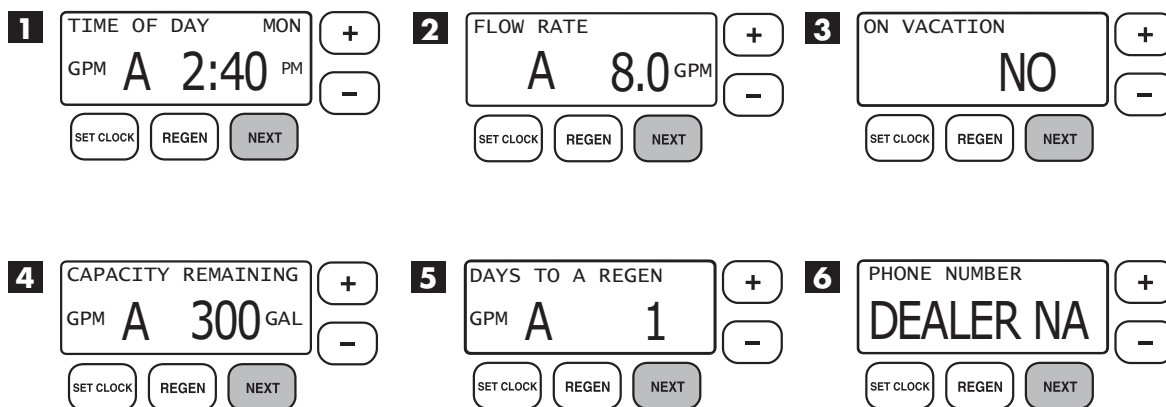
1. With the UF Filter Control Valve in bypass mode and unplugged (**Fig. 2 on page 4**) turn water on slowly. Water will fill system (not the membrane tank) including the pre-filter and post storage tank if used. Run water preferably at a laundry sink or tub faucet and allow plumbing to clear. Check for any leaks at this time in newly installed plumbing.
2. With the UF Filter Control Valve in bypass mode (**Fig. 2 on page 4**) plug control valve transformer into a permanent 110 volt outlet. The valve should be in normal operating mode where the display shows either time of day or gallons remaining, press and hold the **REGEN** button until the motor starts. The display will indicate the unit is in the regeneration mode. Release the button.
3. The unit is now in backwash position, this will be indicated on the control valve screen. Do not turn the water on.
4. Push **REGEN** button to advance the control valve to the rinse position. Once the valve enters the rinse position, unplug from receptacle. Leaving the valve in this position, open the inlet bypass valve to the system slowly, this will allow water to enter the tank slowly and flush the air to the drain. Once system is full, a steady stream of water will be observed at the drain. Open inlet bypass valve completely (**Fig. 3 on page 4**) and allow water to drain for 20 minutes. This will allow for proper flushing of the membrane and any preservatives used in the manufacturing and storage process.
5. Plug unit back into the receptacle.
6. Push **REGEN** button and system will return to the normal service position.
7. Again, follow steps 2–6 with the bypass inlet valve open. This will allow for any additional air to be dispelled from the system. It is not necessary to flush for 20 minutes again as in step 4. When or if no air is observed at the drain, proceed to step 8.
8. Advance control valve to the service position. Upon returning to the service position, open the outlet valve of the bypass to the normal operating position. **NOTE:** Bypass valves should be in the normal operation position. (**Fig. 1 on page 4**).
9. Open a faucet at a laundry sink or at a bath tub. Water will now be flowing through the UF filter system. Run system until water is clear.

**NOTE:** If a back flush tank is being used, this will need to be isolated during startup to ensure that no disinfection chemicals enter the tank. This could cause premature failure of the tank.

## OPERATING DISPLAYS AND MAINTENANCE

1. **GENERAL OPERATION:** When the system is operating, one of five displays may be shown and will alternate with the installing dealer's name and phone number for future service. Pressing **NEXT** will alternate between the displays.
  1. **CURRENT TIME OF DAY** and **GPM**.
  2. **FLOW RATE** which is the current treated water flow rate through the system in Gallons Per Minute.
  3. **VACATION MODE** allows the system to be "shut down" when there will be no water usage for an extended period of time.
  4. **CAPACITY REMAINING** which is the gallons that will be treated before the system signals a regeneration cycle.
  5. **TIME TO A REGEN** is the number of days left before the system goes through a regeneration cycle, based on the days override value. Because default is every day, 0 Days will appear.
  6. **DEALER NAME AND PHONE NUMBER** is the dealer information to call when service is needed (this screen will only appear if set by dealer).

The user can scroll between the displays as desired.



If the system has called for a regeneration that will occur at the preset time of regeneration, the words "REGEN TODAY" will appear on the display.

If a water meter is installed, "GPM" flashes on the display when water is being treated, indicating gallons per minute going through the system.

2. **VACATION MODE:** This feature may be used to "shut down" the system for a period of time by preventing the unit from regenerating. The manufacturer has factory set "OFF" as the default. Turn feature "OFF" or "ON" using the + or - buttons. When turned "ON", the unit will remain in Vacation Mode until it is exited. There are two ways that a unit can exit Vacation Mode:

**Manually:** The user may manually exit Vacation Mode by changing the setting from "ON" to "OFF". Once switched off, a delayed regeneration will queue for that night. Vacation mode may also be manually exited by holding the REGEN button to force an immediate regeneration.

**Automatically:** The unit will automatically exit Vacation Mode once water usage has resumed. After fifty gallons of water is used, the unit will set to resume normal operation and a delayed regeneration will queue for that night.

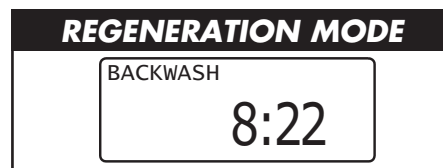
**NOTE:** In some instances, if a regeneration has been queued and the unit is taken out of Vacation Mode (Manually or Automatically), the unit will trigger an immediate regeneration instead of a delayed regeneration. For example, if the unit's maximum Days Between Regeneration is reached while the unit is in Vacation Mode, an immediate regeneration will trigger as soon as the unit is taken out of Vacation Mode.



**CAUTION:** Depending on the severity of water conditions and the length of no water usage, it may not be recommended to use this feature. Please contact dealer or manufacturer for more information.

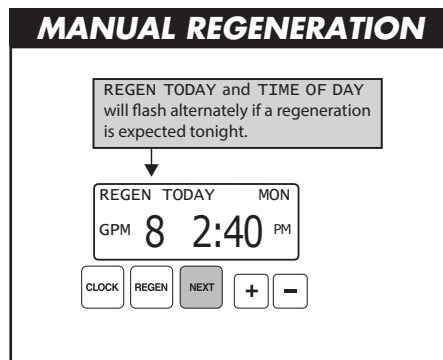
## OPERATING DISPLAYS AND MAINTENANCE

3. **REGENERATION MODE:** Standard UF Filters typically regenerate once per day. Regenerations occur once the capacity of the tank providing treated water reaches zero gallons. At this time, the online tank will transfer and put the standby tank online so that there is no disruption of treated water service. This is a short (2 minute) back flush of the membrane. When the system begins to regenerate, the display will include information about the step of the regeneration process and the time remaining for that step to be completed. The system runs through the steps automatically and will reset itself to provide treated water when the regeneration has been completed.



4. **MANUAL REGENERATION:** Sometimes there is a need to regenerate before the control valve calls for it. This may be needed if a period of heavy water use is anticipated or if a pressure drop is noticed in the system.

- To initiate a manual regeneration *at the next preset regeneration time*, press and release **REGEN**. The words "REGEN TODAY" will flash on the display to indicate that the system will regenerate at the next regeneration time (set in Programming). *If you pressed the **REGEN** button in error, pressing the button again will cancel the command.*
- To initiate a manual regeneration *immediately*, press and hold the **REGEN** button for three seconds. The system will begin to regenerate immediately. ***This command cannot be cancelled.***



**On Standard UF Filters** once a manual regeneration is initiated, the unit will proceed to the backwash position. In this position a two minute flush to the drain will occur. This backwash allows for flushing of particulates from the membrane to the drain. Once this is complete, the unit transfers to a one minute rinse. This rinses the tank of these same particles.

5. **POWER LOSS AND BATTERY REPLACEMENT:** If an extended power outage occurs, the control valve will retain the time of day settings until the board's battery is depleted. Once the battery is depleted, the display will appear dark and absent of any information. If this occurs, following these steps will determine if the problem is a low battery or a board failure.

To determine if the battery is depleted:

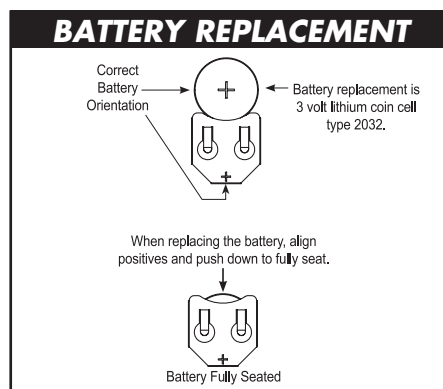
1. Remove valve cover. Disconnect power from PC Board at the four pin connector at the bottom of the board.
2. Remove battery. Reference the Parts Breakdown section of this manual for location.
3. Wait five minutes for board to de-energize.
4. With the battery out, re-connect the power supply to the board. The board's display should begin to show information.

***This indicates that the board is operating correctly. If the display does not work, call installing dealer for service.***

5. To replace with new battery, unplug transformer from outlet. Install a 3 volt Lithium Coin Cell type 2032 battery, available at most stores. Plug unit back into outlet.

***It is important to replace the battery with the valve unplugged to avoid causing a short and potentially ruining the board.***

6. Reset the time of day (see programming procedures) and initiate regeneration (see operating displays and maintenance), ***If these procedures do not remedy the problem, please consult the installing dealer for service.***



6. **AUDIBLE ALARM:** This control valve is equipped with an audible alarm and visual alarm. This alarm is set by the installing dealer and is used to warn the owner of possible valve errors or other issues.

**To turn off alarm:** If the audible alarm sounds, press any button on the face of the control valve to turn off and call the dealer for service.

7. **ERROR MESSAGE:** If the word "ERROR" appears and flashes alternately with the dealer name and phone number, record the ERROR number and contact your servicing dealer promptly. This indicates that the control valve was not able to function properly.



# TROUBLESHOOTING GUIDE

| PROBLEM   | CAUSE   | CORRECTION  |
|---|---|---|
| <b>1. No display on PC board</b>  | A. No power at electric outlet  | A. Repair outlet or use working outlet  |
|   | B. Control valve power adapter not plugged into outlet or power cord end not connected to PC board connection | B. Plug power adapter into outlet or connect power cord end to PC board connection  |
|   | C. Improper power supply  | C. Verify proper voltage is being delivered to PC board   |
|   | D. Defective power adapter  | D. Replace power adapter  |
|   | E. Defective PC board   | E. Replace PC board   |
|   | F. Depleted battery   | F. See Operating Display and Maintenance section  |
| <b>2. PC board does not display correct time of day</b>   | A. Power adapter plugged into electric outlet controlled by light switch                                      | A. Use uninterrupted outlet   |
|   | B. Tripped breaker switch and/or tripped GFI  | B. Reset breaker switch and/or GFI switch   |
|   | C. Power outage   | C. Reset time of day. If PC board has battery back up present the battery may be depleted. See front cover and drive assembly drawing for instructions. |
|   | D. Defective PC board   | D. Replace PC board   |
| <b>3. Display does not indicate that water is flowing. Refer to user instructions for how the display indicates water is flowing.</b>   | A. Bypass valve in bypass position  | A. Turn bypass handles to place bypass in service position  |
|   | B. Meter is not connected to meter connection on PC board   | B. Connect meter to three pin connection labeled METER on PC board  |
|   | C. Restricted/stalled meter turbine   | C. Remove meter and check for rotation or foreign material  |
|   | D. Meter wire not installed securely into three pin connector   | D. Verify meter cable wires are installed securely into three pin connector labeled METER   |
|   | E. Defective meter  | E. Replace meter  |
|   | F. Defective PC board   | F. Replace PC board   |
| <b>4. Control valve regenerates at wrong time of day</b>  | A. Power outage   | A. Reset time of day. If PC board has battery back up present the battery may be depleted. See front cover and drive assembly drawing for instructions. |
|   | B. Time of day not set correctly  | B. Reset to correct time of day   |
|   | C. Time of regeneration set incorrectly   | C. Reset regeneration time  |
|   | D. Control valve set at "on 0" (immediate regeneration)   | D. Check programming setting and reset to NORMAL (for a delayed regen time)   |
|   | E. Control valve set at "NORMAL + on 0" (delayed and/or immediate)  | E. Check programming setting and reset to NORMAL (for a delayed regen time)   |
| <b>5. Time of day flashes on and off</b>  | A. Power outage   | A. Reset time of day. If PC board has battery back up present the battery may be depleted. See front cover and drive assembly drawing for instructions. |
| <b>6. Control valve does not regenerate automatically when the correct button(s) is depressed and held. For timeclock valves the buttons are ▲ &amp; ▼. For all other valves the button is REGEN.</b> | A. Broken drive gear or drive cap assembly  | A. Replace drive gear or drive cap assembly   |
|   | B. Broken piston rod  | B. Replace piston rod   |
|   | C. Defective PC board   | C. Defective PC board   |
|   | D. Cover installed incorrectly  | D. Reinstall cover  |

| PROBLEM  | CAUSE  | CORRECTION  |
|--|--|---|
| <b>7. Control valve does not regenerate automatically but does when the correct button(s) is depressed and held. For timeclock valves the buttons are ▲ &amp; ▼. For all other valves the button is REGEN.</b> | A. Bypass valve in bypass position                             | A. Turn bypass handles to place bypass in service position  |
|  | B. Meter is not connected to meter connection on PC board      | B. Connect meter to three pin connection labeled METER on PC board  |
|  | C. Restricted/stalled meter turbine                            | C. Remove meter and check for rotation or foreign material  |
|  | D. Incorrect programming                                       | D. Check for programming error  |
|  | E. Meter wire not installed securely into three pin connector  | E. Verify meter cable wires are installed securely into three pin connector labeled METER                         |
|  | F. Defective meter   | F. Replace meter  |
|  | G. Defective PC board  | G. Replace PC board   |
| <b>8. Hard or untreated water is being delivered</b>   | A. Bypass valve is open or faulty                              | A. Fully close bypass valve or replace  |
|  | B. Media is exhausted due to high water usage                  | B. Check program settings or diagnostics for abnormal water usage   |
|  | C. Meter not registering                                       | C. Remove meter and check for rotation or foreign material  |
|  | D. Water quality fluctuation                                   | D. Test water and adjust program values accordingly   |
|  | E. No regenerant or low level of regenerant in regenerant tank | E. Add proper regenerant to tank  |
|  | F. Control fails to draw in regenerant                         | F. Refer to Troubleshooting Guide number 12   |
|  | G. Insufficient regenerant level in regenerant tank            | G. Check refill setting in programming. Check refill flow control for restrictions or debris and clean or replace |
|  | H. Damaged seal/stack assembly                                 | H. Replace seal/stack assembly  |
|  | I. Control valve body type and piston type mix matched         | I. Verify proper control valve body type and piston type match  |
|  | J. Fouled media bed  | J. Replace media bed  |
| <b>9. Control valve uses too much regenerant</b>   | A. Improper refill setting                                     | A. Check refill setting   |
|  | B. Improper program settings                                   | B. Check program setting to make sure they are specific to the water quality and application needs                |
|  | C. Control valve regenerates frequently                        | C. Check for leaking fixtures that may be exhausting capacity or system is undersized                             |
| <b>10. Residual regenerant being delivered to service</b>  | A. Low water pressure  | A. Check incoming water pressure – water pressure must remain at minimum of 25 psi                                |
|  | B. Incorrect, damaged, or restricted injector                  | B. Replace injector with correct size for the application   |
|  | C. Restricted drain line                                       | C. Check drain line for restrictions or debris and clean  |
| <b>11. Excessive water in regenerant tank</b>  | A. Improper program settings                                   | A. Check refill setting   |
|  | B. Plugged injector  | B. Remove injector and clean or replace   |
|  | C. Drive cap assembly not tightened in properly                | C. Retighten the drive cap assembly   |
|  | D. Damaged seal/stack assembly                                 | D. Replace seal/stack   |
|  | E. Restricted or kinked drain line                             | E. Check drain line for restrictions or debris and or unkink drain line   |
|  | F. Plugged backwash flow controller                            | F. Remove backwash flow controller and clean or replace   |
|  | G. Missing refill flow controller                              | G. Replace refill flow controller   |

# TROUBLESHOOTING GUIDE

| PROBLEM   | CAUSE   | CORRECTION   |
|---|---|--|
| <b>12. Control valve fails to draw in regenerant</b>  | A. Injector is plugged  | A. Remove injector and clean or replace  |
|   | B. Faulty regenerant piston   | B. Replace regenerant piston   |
|   | C. Regenerant line connection leak  | C. Inspect regenerant line for air leak  |
|   | D. Drain line restriction or debris cause excess back pressure                  | D. Inspect drain line and clean to correct restriction   |
|   | E. Drain line too long or too high  | E. Shorten length and or height  |
|   | F. Low water pressure   | F. Check incoming water pressure – water pressure must remain at minimum of 25 psi   |
| <b>13. Water running to drain</b>   | A. Power outage during regeneration   | A. Upon power being restored control will finish the remaining regeneration time. Reset time of day. If PC board has battery back up present the battery may be depleted. See front cover and drive assembly drawing for instructions.   |
|   | B. Damaged seal/stack assembly  | B. Replace seal/stack assembly   |
|   | C. Piston assembly failure  | C. Replace piston assembly   |
|   | D. Drive cap assembly not tightened in properly                                 | D. Retighten the drive cap assembly  |
| <b>14. E1, Err – 1001, Err – 101 = Control unable to sense motor movement</b>   | A. Motor not inserted full to engage pinion, motor wires broken or disconnected | A. Disconnect power, make sure motor is fully engaged, check for broken wires, make sure two pin connector on motor is connected to the two pin connection on the PC board labeled MOTOR. Press NEXT and REGEN buttons for 3 seconds to resynchronize software with piston position or disconnect power supply from PC board for 5 seconds and then reconnect. |
|   | B. PC board not properly snapped into drive bracket                             | B. Properly snap PC board into drive bracket and then Press NEXT and REGEN buttons for 3 seconds to resynchronize software with piston position or disconnect power supply from PC board for 5 seconds and then reconnect.   |
|   | C. Missing reduction gears  | C. Replace missing gears   |
| <b>15. E2, Err – 1002, Err – 102 = Control valve motor ran too short and was unable to find the next cycle position and stalled</b> | A. Foreign material is lodged in control valve                                  | A. Open up control valve and pull out piston assembly and seal/stack assembly for inspection. Press NEXT and REGEN buttons for 3 seconds to resynchronize software with piston position or disconnect power supply from PC board for 5 seconds and then reconnect.   |
|   | B. Mechanical binding   | B. Check piston and seal/stack assembly, check reduction gears, check drive bracket and main drive gear interface. Press NEXT and REGEN buttons for 3 seconds to resynchronize software with piston position or disconnect power supply from PC board for 5 seconds and then reconnect.  |
|   | C. Main drive gear too tight  | C. Loosen main drive gear. Press NEXT and REGEN buttons for 3 seconds to resynchronize software with piston position or disconnect power supply from PC board for 5 seconds and then reconnect.  |
|   | D. Improper voltage being delivered to PC board                                 | D. Verify that proper voltage is being supplied. Press NEXT and REGEN buttons for 3 seconds to resynchronize software with piston position or disconnect power supply from PC board for 5 seconds and then reconnect.  |



# TROUBLESHOOTING GUIDE

| PROBLEM  | CAUSE  | CORRECTION  |
|--|--|---|
| <b>16. E3, Err – 1003, Err – 103 = Control valve motor ran too long and was unable to find the next cycle position</b>   | A. Motor failure during a regeneration   | A. Check motor connections then Press NEXT and REGEN buttons for 3 seconds to resynchronize software with piston position or disconnect power supply from PC board for 5 seconds and then reconnect.  |
|  | B. Foreign matter built up on piston and stack assemblies creating friction and drag enough to time out motor                            | B. Replace piston and stack assemblies. Press NEXT and REGEN buttons for 3 seconds to resynchronize software with piston position or disconnect power supply from PC board for 5 seconds and then reconnect.  |
|  | C. Drive bracket not snapped in properly and out enough that reduction gears and drive gear do not interface                             | C. Snap drive bracket in properly then Press NEXT and REGEN buttons for 3 seconds to resynchronize software with piston position or disconnect power supply from PC board for 5 seconds and then reconnect.   |
| <b>17. E4, Err – 1004, Err – 104 = Control valve motor ran too long and timed out trying to reach home position</b>  | A. Drive bracket not snapped in properly and out enough that reduction gears and drive gear do not interface                             | A. Snap drive bracket in properly then Press NEXT and REGEN buttons for 3 seconds to resynchronize software with piston position or disconnect power supply from PC board for 5 seconds and then reconnect.   |
| <b>18. Err – 1006, Err – 106, Err – 116 = MAV/ SEPS/ NHBP/ AUX MAV valve motor ran too long and unable to find the proper park position</b><br><b>Motorized Alternating Valve = MAV</b><br><b>Separate Source = SEPS</b><br><b>No Hard Water Bypass = NHBP</b><br><b>Auxiliary MAV = AUX MAV</b>     | A. Control valve programmed for ALT A or B, nHbP, SEPS, or AUX MAV with out having a MAV or NHBP valve attached to operate that function | A. Press NEXT and REGEN buttons for 3 seconds to resynchronize software with piston position or disconnect power supply from PC board for 5 seconds and then reconnect. Then reprogram valve to proper setting  |
|  | B. MAV/NHBP motor wire not connected to PC board   | B. Connect MAV/NHBP motor to PC board two pin connection labeled DRIVE. Press NEXT and REGEN buttons for 3 seconds to resynchronize software with piston position or disconnect power supply from PC board for 5 seconds and then reconnect.  |
|  | C. MAV/NHBP motor not fully engaged with reduction gears   | C. Properly insert motor into casing, do not force into casing Press NEXT and REGEN buttons for 3 seconds to resynchronize software with piston position or disconnect power supply from PC board for 5 seconds and then reconnect.   |
|  | D. Foreign matter built up on piston and stack assemblies creating friction and drag enough to time out motor                            | D. Replace piston and stack assemblies. Press NEXT and REGEN buttons for 3 seconds to resynchronize software with piston position or disconnect power supply from PC board for 5 seconds and then reconnect.  |
| <b>19. Err – 1007, Err – 107, Err – 117 = MAV/ SEPS/NHBP/AUX MAV valve motor ran too short (stalled) while looking for proper park position</b><br><b>Motorized Alternating Valve = MAV</b><br><b>Separate Source = SEPS</b><br><b>No Hard Water Bypass = NHBP</b><br><b>Auxiliary MAV = AUX MAV</b> | A. Foreign material is lodged in MAV/NHBP valve  | A. Open up MAV/NHBP valve and check piston and seal/ stack assembly for foreign material. Press NEXT and REGEN buttons for 3 seconds to resynchronize software with piston position or disconnect power supply from PC board for 5 seconds and then reconnect.  |
|  | B. Mechanical binding  | B. Check piston and seal/stack assembly, check reduction gears, drive gear interface, and check MAV/NHBP black drive pinion on motor for being jammed into motor body. Press NEXT and REGEN buttons for 3 seconds to resynchronize software with piston position or disconnect power supply from PC board for 5 seconds and then reconnect. |

## TROUBLESHOOTING GUIDE

| PROBLEM  | CAUSE  | CORRECTION  |
|--|--|---|
| 20. Err – 109  | A. Invalid motor state detected  | A. Replace PC board   |
| 21. Err – 201  | A. Invalid regeneration cycle step detected  | A. Replace PC board   |
| 22. Err – 204 = Leak detected  | A. Occurs when dP input is active for “ALARM” and the input is closed. The alarm buzzer will activate and the screen will display the error. | A. Check for low flow leak. Press NEXT and REGEN buttons for 3 seconds to resynchronize software with piston position or disconnect power supply from PC Board for 5 seconds and then reconnect to clear error. |
| 23. Err – 400*<br>Memory Errors<br><i>*(All 400 errors pertain to memory related errors)</i> | A. Depleted Battery  | A. See Operating Display and Maintenance section  |
|  | B. Defective PC Board  | B. Replace PC board   |



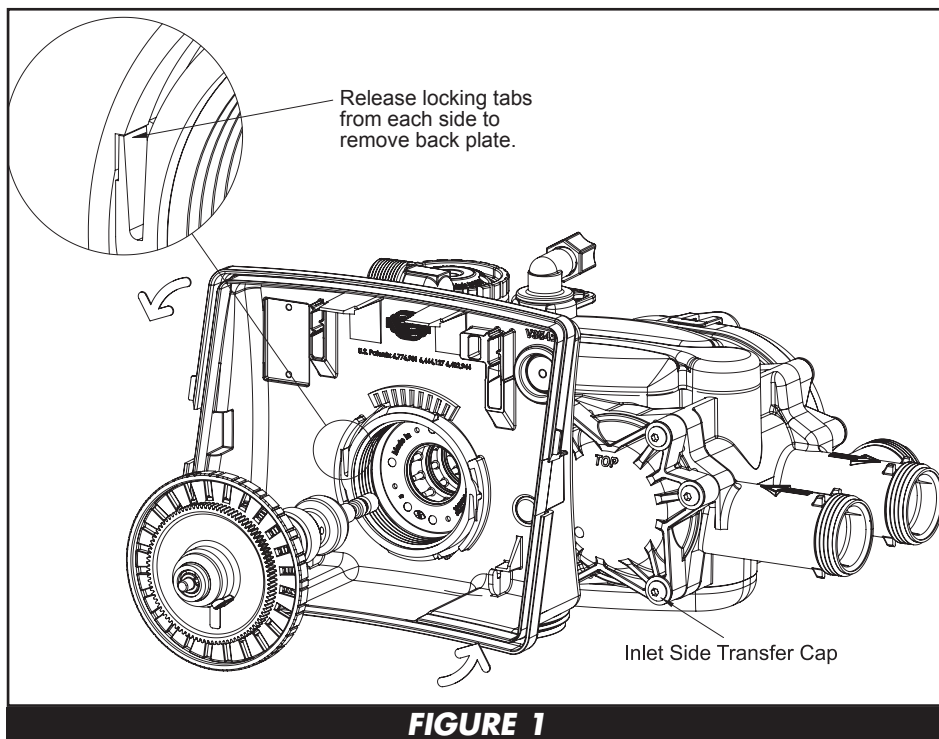
## SERVICE INSTRUCTIONS

### TRANSFER CAP ASSEMBLIES SERVICE INSTRUCTIONS

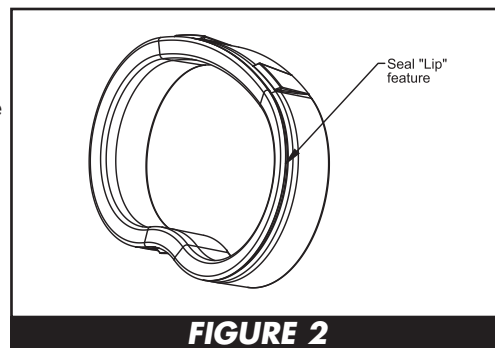
1. The backplate of the control valve must first be removed to allow access to the transfer cap assembly.
2. Hold slight downward pressure on the top left corner of the backplate while using a thin flat screwdriver or knife blade to push in on the locking tabs. This will release the backplate and it will twist to the left of the valve body.
3. For removal of the drive motor side (**Fig. 3**), remove the drive cover assembly to access the motorized drive. The drive motor can be removed by pressing the spring clip loop to the right then rotating the motor a quarter turn. Pull outward to remove the motor from the reducing gear cover assembly.
4. Remove the three Phillips head stainless steel screws that retain the reducing gear cover to the drive cap.
5. Once the cover is removed, there will be access to the reducing drive gears. Simply slide them off of the gear axles, then inspect and check them (there are three small black gears with foil decals and one larger black reducing gear).
6. Remove the large white drive gear from the stainless steel drive shaft. To remove the large white transfer drive gear, firmly grab the outside edge of the gear and pull it outward away from the control valve assembly.
7. Use a 5/32" or 4 mm Allen wrench to remove the 1/4-#20 screws (six screws on each side) that retain the transfer drive cap assemblies on both sides of the valve.
8. Once the screws are removed from retaining the inlet side transfer valve cap and the outlet drive motor transfer cap from the control valve, the cap will spring out away from the valve body. At this point the transfer discs may be removed by pulling the discs outward off of the shaft away from the valve body. With the disc out, inspect the flat surface area to be sure it is clean, smooth and free of any debris or scratches. Note that the disc is keyed to the drive shaft so that it will only assemble in one orientation. (See parts diagram on page 20.)
9. The transfer discs may be chemically cleaned with a dilute sodium bisulfate solution (Iron Out), vinegar or just wiped with a soft clean cloth.
10. To remove seals, gently pull out on the outer lip of the seal to lift the seal out from its cavity being careful not to damage the face surface of the seal.
11. To reassemble, re-seat seals into the seal cavity of the control valve body being sure that the lip of the seal is facing outward. **See Fig. 2.**
12. With seals in place, put a thin film of Dow #7 silicone grease on the tops of the seals and the flat surface of the discs.



**CAUTION:** Do not use Vaseline, petroleum jelly or any other hydrocarbon lubricants on plastic components or O-rings as they will cause damage to the material and can potentially cause leaks in the system.



**FIGURE 1**



**FIGURE 2**

## SERVICE INSTRUCTIONS

13. Prior to reinstalling the discs, the drive shaft should be removed and the O-rings cleaned, inspected and lubricated with Dow #7 silicone grease. The shaft can now be installed into the disc prior to installation.
14. With the outlet disc assembled to the shaft, the orientation of the shaft to inlet disc can be assured by installing the set with the through hole on the outlet disc at the 6 o'clock position. The easiest way to reassemble is to remove both disc drives and assemble the outlet side first. Then each disc can be fitted on the shaft individually. At this point the transfer valve cap assemblies can be reinstalled.

**NOTE:** Both transfer caps only mount in one orientation. Prior to installation of cap assembly, be sure to check that the stainless steel spring and the plastic spring support is in place and attached to the inside of the assembly.

15. Wipe the outside edge of the O-ring on the cap and the inside mating area of the valve with a clean cloth and reapply a thin layer of Dow #7 silicone grease.

16. Noting the one possible orientation of the transfer drive cap, use one hand to press in and support the transfer drive cap while using the opposing hand to start two screws in, one on the top and one opposing it on the bottom. Tighten the screws evenly so that the cap seats the O-ring without getting pinched or damaged. Screws should only be hand tightened with a 5/32" or 4 mm Allen wrench. **DO NOT OVER TIGHTEN SCREWS.**

**NOTE:** Take care to be certain the meter cable doesn't get under the drive cap while tightening as it will result in damaging the cable.

17. Position the large white drive gear with the "A" pointing toward the one o'clock position and then press it onto the stainless steel drive shaft, making sure it snaps and locks into position.

**NOTE:** The white drive gear is splined to the drive shaft and will only assemble in one orientation. Because of this, it is not necessary that the discs and gear be exactly positioned. The positioning needs to be approximate but they have to fit on the shaft.

18. Install the larger black reducing gear onto the stainless steel shaft, then install the remaining smaller reducing gears from left to right.

19. Reinstall the grey reducing gear cover over the gears and affix with the three stainless steel screws.

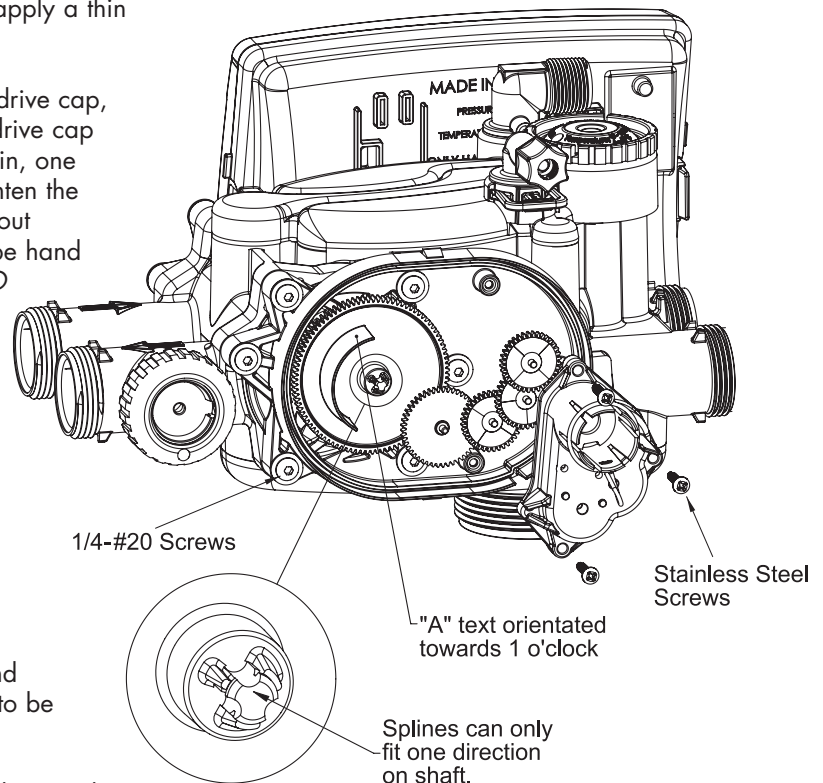
20. Reinstall the drive motor by pressing the spring clip loop to the right, then rotate the motor as you are inserting it so the gear of the motor meshes properly with the reducing gears.

21. Release the spring clip loop and rotate the motor until the motor housing engages with the plastic nub inside the housing that holds the motor in place, making sure that the top of the motor is flush with the top of the grey gear housing.

22. Press the drive motor wires down into the strain relief of the drive cap.

23. Reinstall the cover assembly.

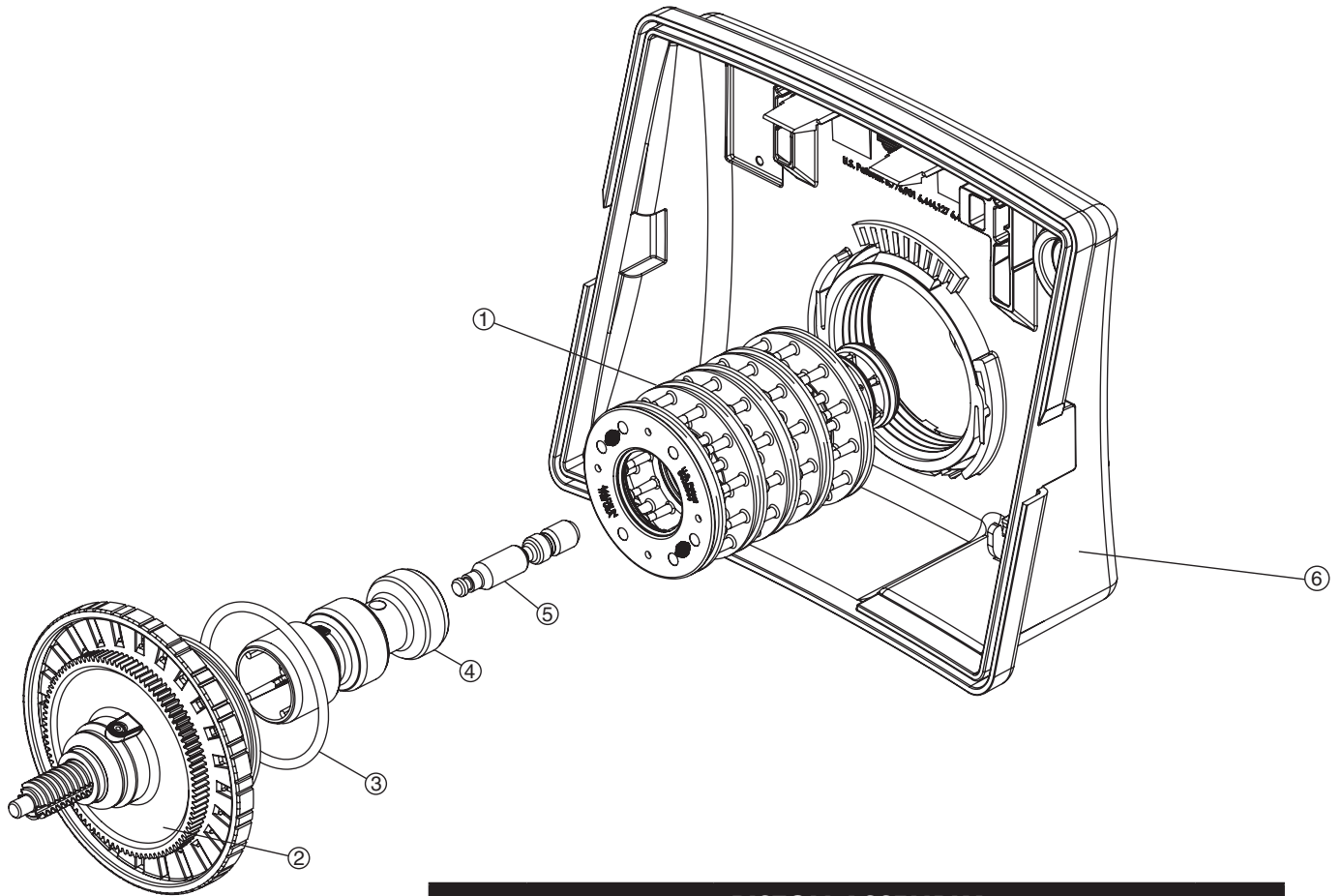
After completing any valve maintenance involving the valve drive assembly or the transfer drive assembly, press and hold the **NEXT** and **REGEN** buttons simultaneously for three to five seconds to perform a soft reset which will synchronize the control valves positions.



**FIGURE 3**

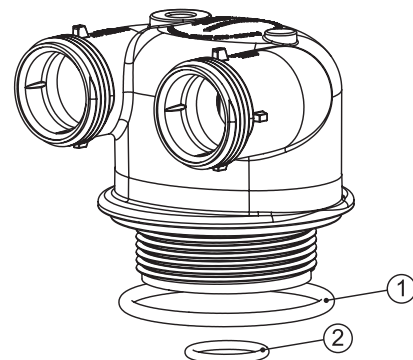
*This page left intentionally blank.*

## REPLACEMENT PARTS



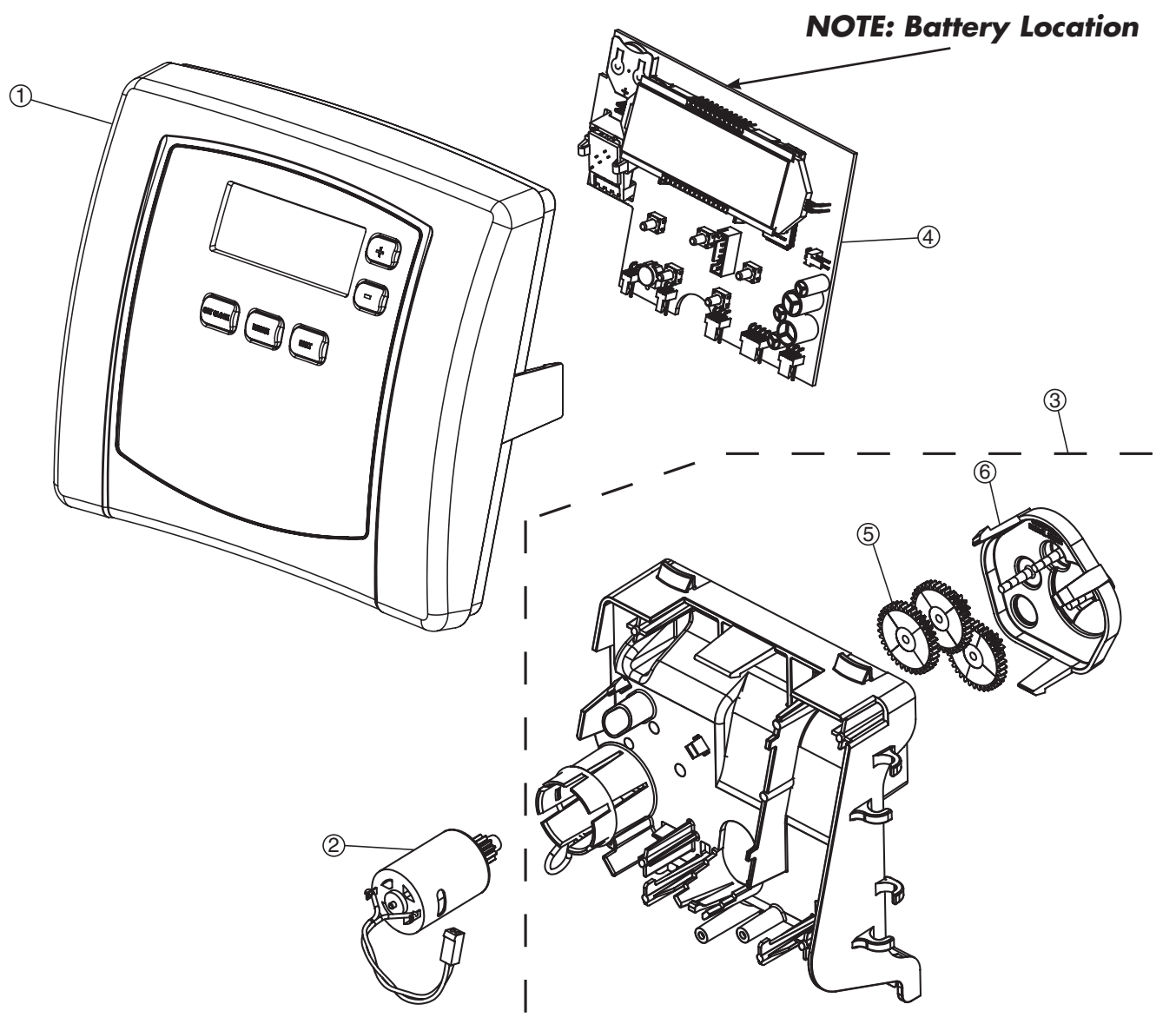
| PISTON ASSEMBLY |           |                             |      |
|-----------------|-----------|-----------------------------|------|
| Item No.        | Part No.  | Description                 | Qty. |
| 1               | CV3005    | 1" spacer stack assembly    | 1    |
| 2               | CV3004    | Drive cap assembly          | 1    |
| 3               | CV3135    | O-ring 228                  | 1    |
| 4               | CV3011    | 1" piston assembly downflow | 1    |
|                 | CV3011-01 | 1" piston assembly upflow   | 1    |
| 5               | CV3174    | Regenerant piston           | 1    |
| 6               | CV3541    | Drive backplate             | 1    |

| IN/OUT HEAD (FOR TANK B) |          |                                     |      |
|--------------------------|----------|-------------------------------------|------|
| Item No.                 | Part No. | Description                         | Qty. |
|                          | CD1400   | 1191 In/Out head (includes O-rings) | 1    |
| 1                        | CV3180   | O-ring 337                          | 1    |
| 2                        | CV3105   | O-ring 215                          | 1    |

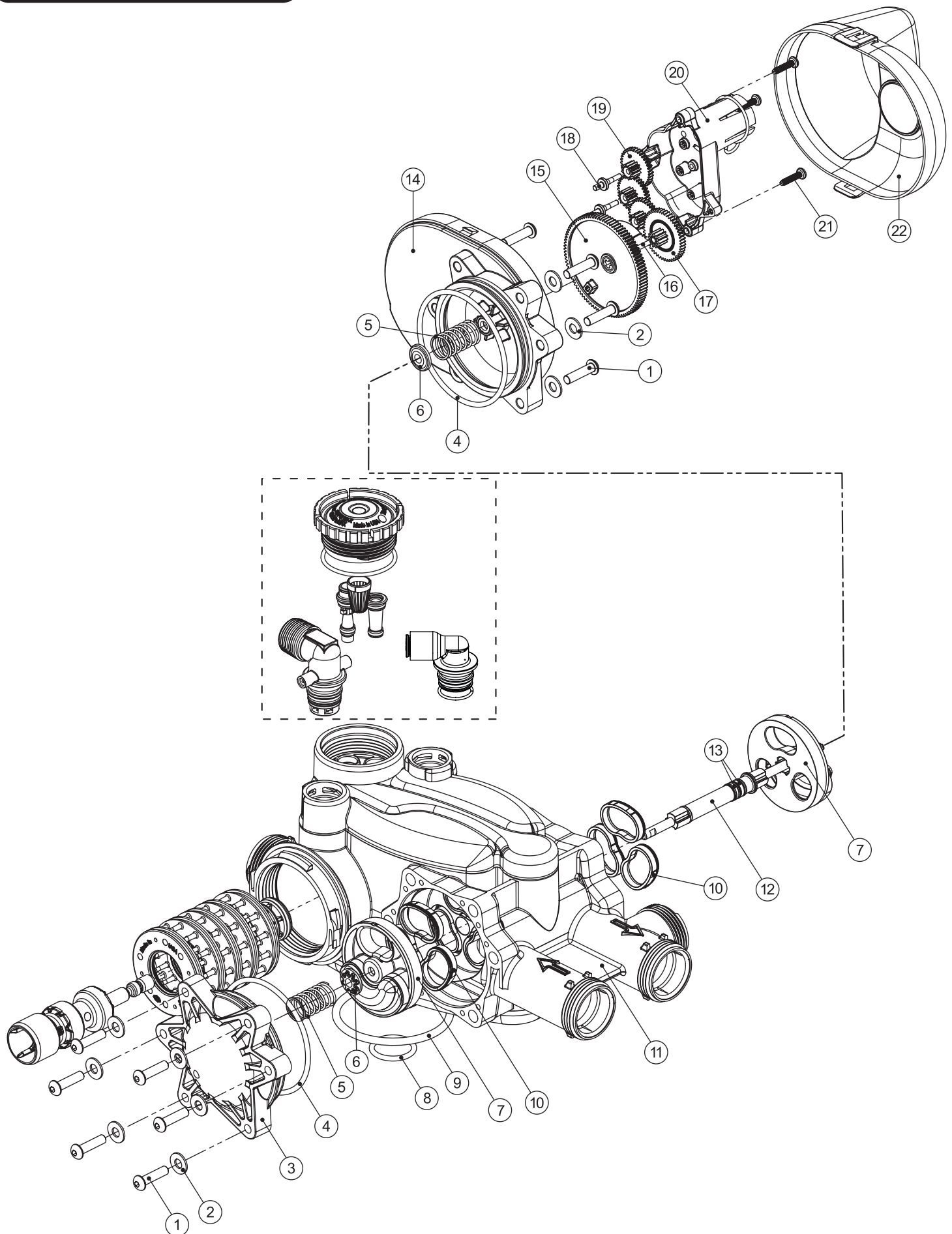


## REPLACEMENT PARTS:

| FRONT COVER AND DRIVE ASSEMBLY |            |  |      |
|--------------------------------|------------|--|------|
| Item No.                       | Part No.   | Description                                      | Qty. |
| 1                              | CV3540CC-A | CustomCare black cover                           | 1    |
| 2                              | CV3107-1   | Motor  | 1    |
| 3                              | CV3002A    | Drive bracket & spring clip<br>(Includes #5, #6) | 1    |
| 4                              | CV4022WU   | PC board (standard)                              | 1    |
| 5                              | CV3110     | Drive gear, 12 x 36                              | 3    |
| 6                              | CV3109     | Drive gear cover                                 | 1    |
| not shown                      | CV3186     | Transformer, 110V-12V, AC (standard)             | 1    |
|                                | CV3543     | <i>Optional</i> weather cover                    | 1    |



# REPLACEMENT PARTS

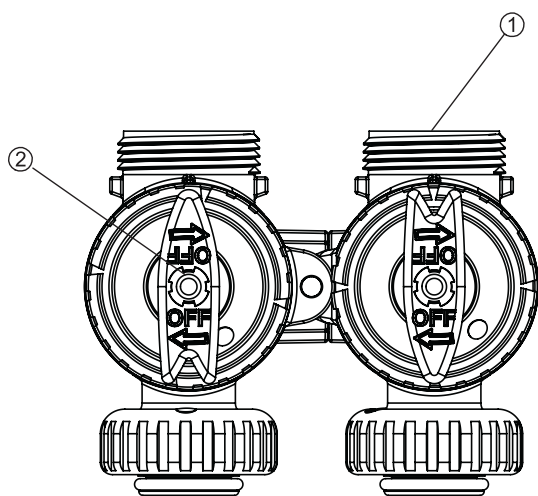


## REPLACEMENT PARTS

| TWIN TRANSFER   |           |   |      |
|---|-----------|---|------|
| Item No.  | Part No.  | Description                                     | Qty. |
| 1   | CV3470    | Screw, BHC 1/4-20 x 1 SS                        | 12   |
| 2   | CV3724    | Washer, flat SS 1/4                             | 12   |
| 3   | CV4005-01 | T1 transfer cap assembly                        | 1    |
| 4   | CV4029    | O-ring 236                                      | 2    |
| 5   | CV4015    | T1 transfer spring                              | 2    |
| 6   | CV4014    | T1 transfer spring support                      | 2    |
| 7   | CV4036    | T1 rotor disk assembly                          | 2    |
| 8   | CV3105    | O-ring 215 (distributor tube)                   | 1    |
| 9   | CV3180    | O-ring 337                                      | 1    |
| 10  | CV4016    | T1 transfer seal                                | 6    |
| 11  | CV3031    | T1 body sft wtr regen                           | 1    |
| 12  | CV4023    | T1 transfer drive shaft assembly                | 1    |
| 13  | CV3287    | O-ring 110                                      | 2    |
| 14  | CV4006-01 | T1 transfer drive cap assembly                  | 1    |
| 15  | CV4011-01 | T1 transfer drive gear assembly                 | 1    |
| 16  | CV4012    | T1 transfer drive gear axle                     | 1    |
| 17  | CV4013    | T1 transfer reduction gear                      | 1    |
| 18  | CV3264    | WS2H bypass reduction gear axle                 | 3    |
| 19  | CV3110    | WS1 drive reducing gear 12 x 36                 | 3    |
| 20  | CV3262-01 | WS1.5 & 2 ALT/2BY reduction gear cover assembly | 1    |
| 21  | CV3592    | Screw, #8-1 PHPN T-25 SS                        | 3    |
| 22  | CV4049    | T1 cover assembly                               | 1    |
| not shown   | CV4043    | T1 transfer motor assembly                      | 1    |
| not shown   | CV3151    | WS1 nut 1 QC                                    | 1    |
| not shown   | CV4055*   | Twin tank meter assembly                        | 1    |
| not shown   | CV4017-01 | T1 interconnect fitting assembly                | 1    |
| not shown   | D1400     | 1191 In/Out head                                | 1    |
| not shown   | CD1225-05 | Top basket softener (optional)                  | 1    |
| *This water meter should not be used as the primary monitoring device for critical or health effect applications. |           |   |      |

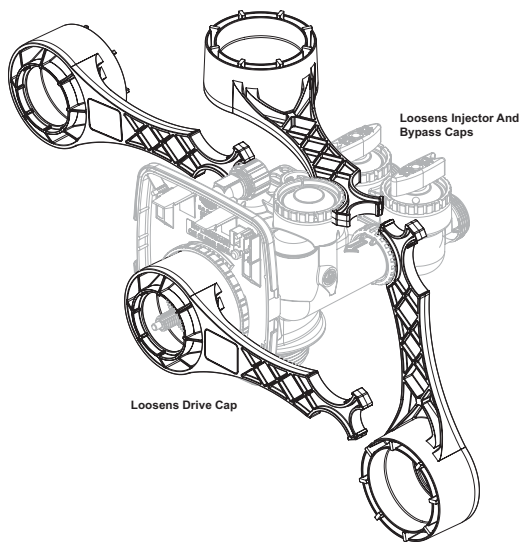


# REPLACEMENT PARTS



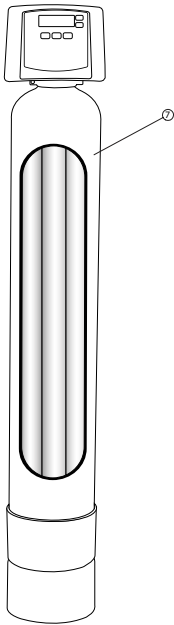
## BYPASS VALVE

| Item No. | Part No. | Description     | Qty. |
|----------|----------|-----------------|------|
| 1        | CV3006   | Bypass assembly | 1    |
| 2        | CV3147   | Bypass handles  | 2    |



## SERVICE WRENCH - CV3193-02

Although no tools are necessary to assemble or disassemble the valve, the *Service Wrench*, (shown in various positions on the valve) is available to aid in assembly or disassembly.

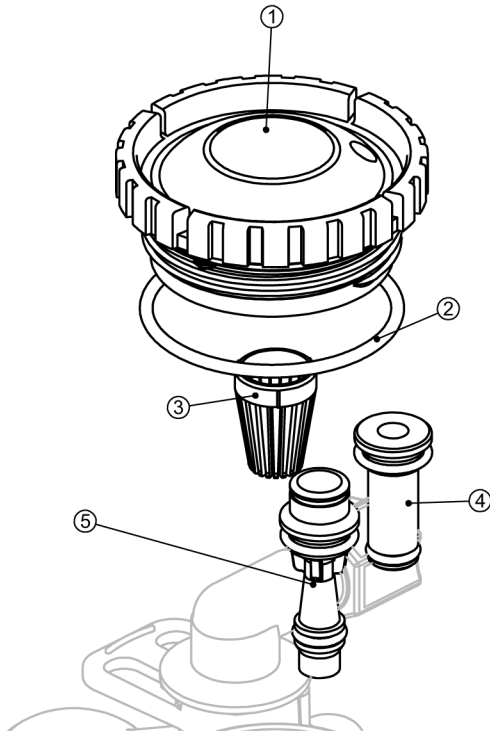


## UF REPLACEMENT TANK

| Item No. | Part No.        | Description              | Qty. |
|----------|-----------------|--------------------------|------|
| 7        | 680842XBBK00UFO | Poly-UF Replacement Tank | 1    |



## REPLACEMENT PARTS



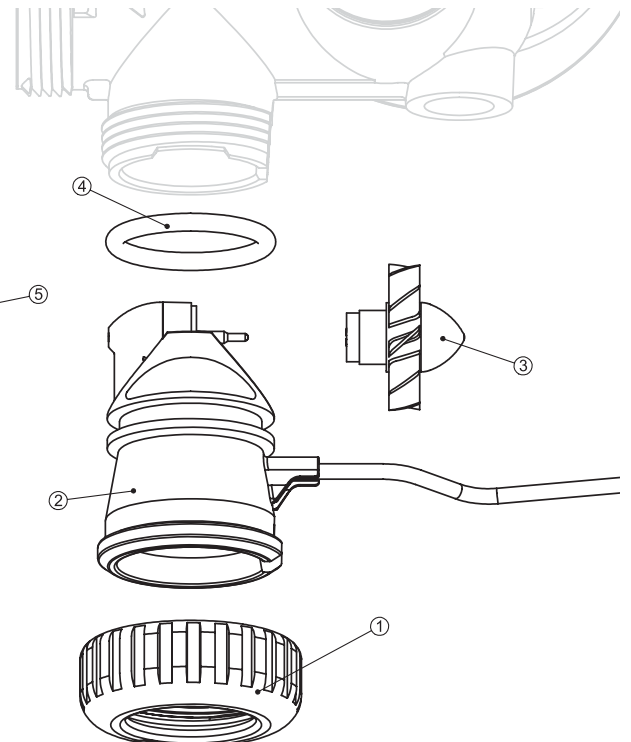
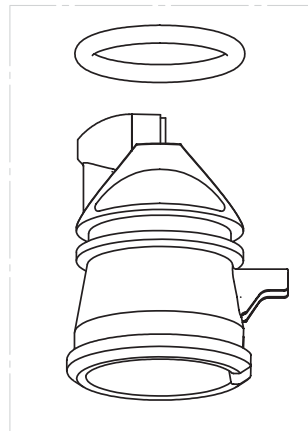
### INJECTOR ASSEMBLIES

| Item No.  | Part No.  | Description                                    | Qty. |
|-----------|-----------|--|------|
| 1         | CV3176    | Injector cap                                   | 1    |
| 2         | CV3152    | O-ring 135                                     | 1    |
| 3         | CV3177-01 | Injector screen                                | 1    |
| 4         | CV3010-1Z | Injector assembly plug                         | 1    |
| 5         | CV3010-1A | <b>A</b> injector assembly, <b>BLACK</b>       | 1    |
|           | CV3010-1B | <b>B</b> injector assembly, <b>BROWN</b>       |      |
|           | CV3010-1C | <b>C</b> injector assembly, <b>VIOLET</b>      |      |
|           | CV3010-1D | <b>D</b> injector assembly, <b>RED</b>         |      |
|           | CV3010-1E | <b>E</b> injector assembly, <b>WHITE</b>       |      |
|           | CV3010-1F | <b>F</b> injector assembly, <b>BLUE</b>        |      |
|           | CV3010-1G | <b>G</b> injector assembly, <b>YELLOW</b>      |      |
|           | CV3010-1H | <b>H</b> injector assembly, <b>GREEN</b>       |      |
|           | CV3010-1I | <b>I</b> injector assembly, <b>ORANGE</b>      |      |
|           | CV3010-1J | <b>J</b> injector assembly, <b>LIGHT BLUE</b>  |      |
|           | CV3010-1K | <b>K</b> injector assembly, <b>LIGHT GREEN</b> |      |
| not shown | CV3170    | O-ring 011, lower                              | *    |
| not shown | CV3171    | O-ring 013, upper                              | *    |

\*The injector plug and the injector each use one lower and one upper o-ring

### WATER METER AND METER PLUG

| Item No. | Part No.  | Description                          | Qty. |
|----------|-----------|--------------------------------------|------|
| 1        | CV3151    | Nut, 1" QC                           | 1    |
| 2        | CV3003-02 | Meter assembly, includes items 3 & 4 | 1    |
| 3        | CV3118-01 | Turbine assembly                     | 1    |
| 4        | CV3105    | O-ring 215                           | 1    |
| 5        | CV3003-01 | Meter plug assembly                  | 1    |

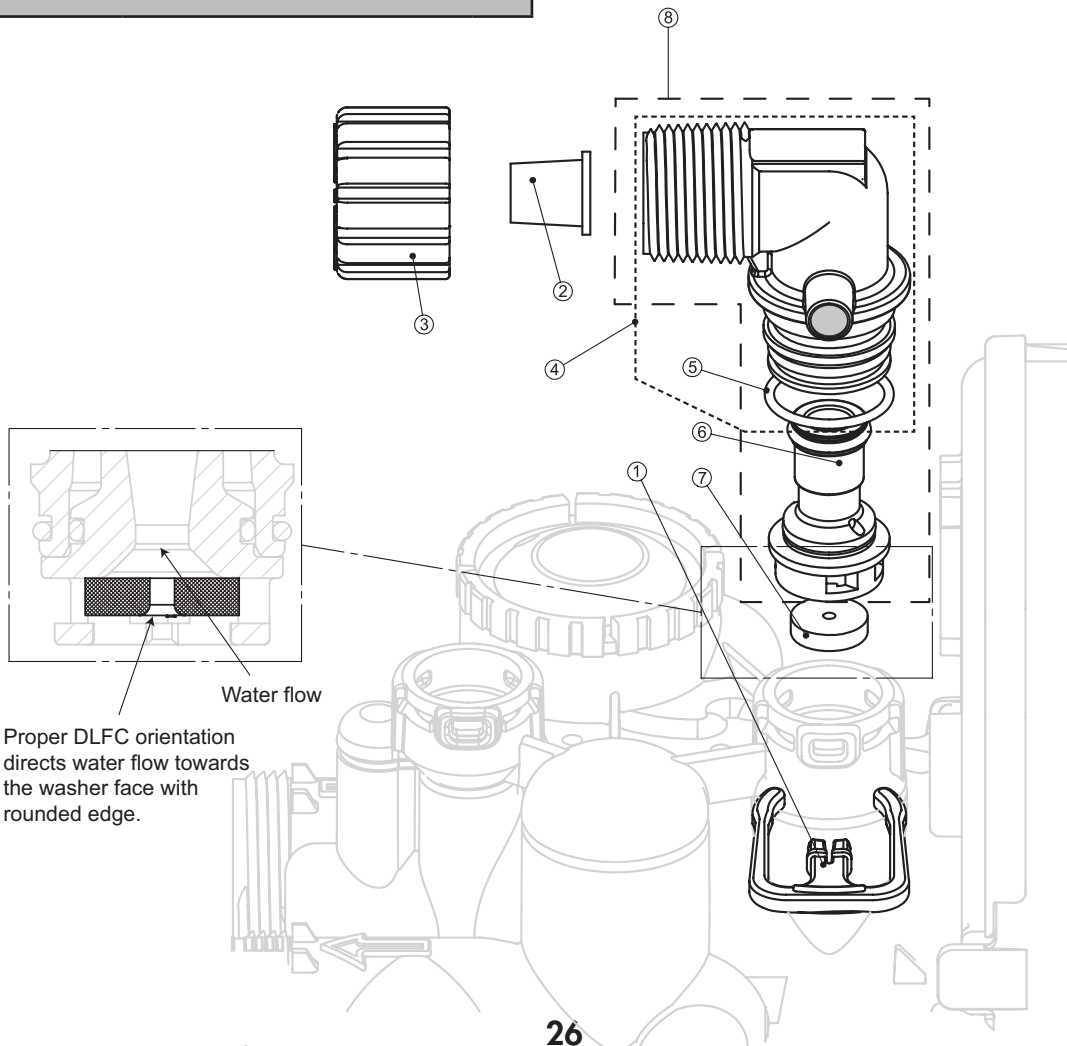


## REPLACEMENT PARTS

### DRAIN LINE ASSEMBLY 3/4"

| Item No. | Part No.       | Description                           | Qty. |
|----------|----------------|---------------------------------------|------|
| 1        | CH4615         | Elbow locking clip                    | 1    |
| 2        | CPKP10TS8-BULK | <b>Optional</b> insert, 5/8" tube     | 1    |
| 3        | CV3192         | <b>Optional</b> nut, 3/4" drain elbow | 1    |
| 4        | CV3158-02      | Drain elbow, 3/4" NPT with O-ring     | 1    |
| 5        | CV3163         | O-ring 019                            | 1    |
| 6        | CV3159-01      | DLFC retainer assembly                | 1    |
| 7        | CV3162-007     | 0.7 DLFC for 3/4" elbow               | 1    |
|          | CV3162-010     | 1.0 DLFC for 3/4" elbow               |      |
|          | CV3162-013     | 1.3 DLFC for 3/4" elbow               |      |
|          | CV3162-017     | 1.7 DLFC for 3/4" elbow               |      |
|          | CV3162-022     | 2.2 DLFC for 3/4" elbow               |      |
|          | CV3162-027     | 2.7 DLFC for 3/4" elbow               |      |
|          | CV3162-032     | 3.2 DLFC for 3/4" elbow               |      |
|          | CV3162-042     | 4.2 DLFC for 3/4" elbow               |      |
|          | CV3162-053     | 5.3 DLFC for 3/4" elbow               |      |
|          | CV3162-065     | 6.5 DLFC for 3/4" elbow               |      |
|          | CV3162-075     | 7.5 DLFC for 3/4" elbow               |      |
| 8        | CV3331         | Drain elbow and retainer assembly     |      |

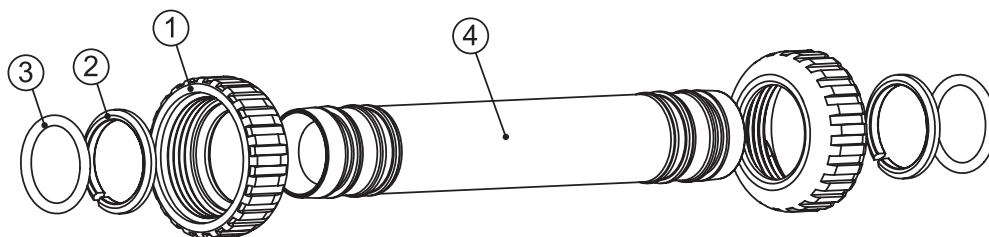
Items 2 and 3, nut and insert are only used with 1/2" I.D. by 5/8" O.D. polytubing. For other piping material, the 3/4" NPT is used.



# INSTALLATION FITTING ASSEMBLIES

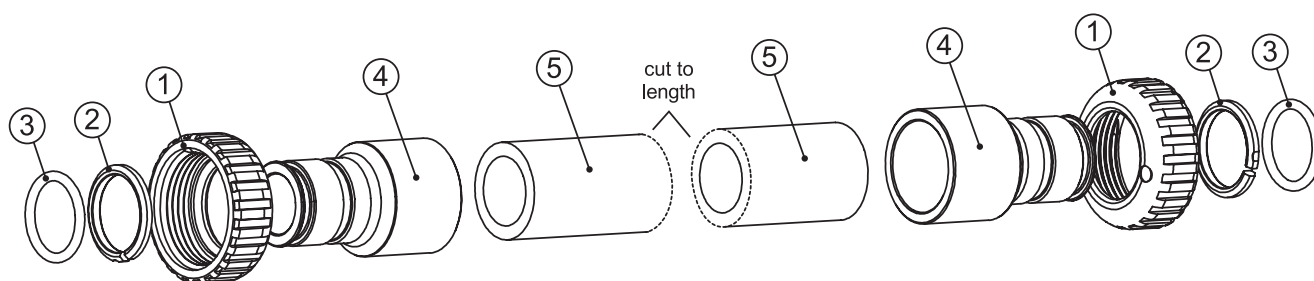
## Fitting Installation Instructions

- Installation fittings are designed to accommodate minor plumbing misalignments, but are not designed to support the weight of a system or the plumbing.
- Slide nut on first, then the split ring and O-ring.
- Hand tighten the nut only.



## INTERCONNECT FITTING ASSEMBLY (UP TO 10" TANKS)

| Item No. | Part No.  | Description                          | Qty. |
|----------|-----------|--------------------------------------|------|
|          | CV4017-01 | Interconnect kit for tanks up to 10" | 1    |
| 1        | CV3151    | Nut, 1" QC                           | 4    |
| 2        | CV3150    | Split ring                           | 4    |
| 3        | CV3105    | O-ring 215                           | 4    |
| 4        | CV4017    | Interconnect fitting                 | 2    |

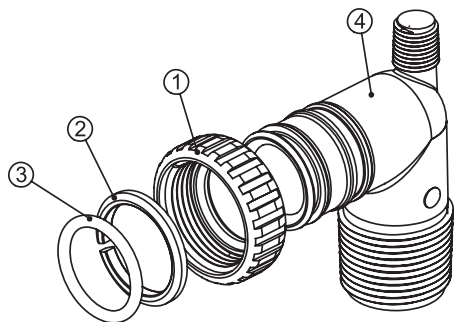


## INTERCONNECT FITTING ASSEMBLY (12" & LARGER TANKS)

| Item No. | Part No.  | Description                               | Qty. |
|----------|-----------|---|------|
|          | CV4052-01 | Interconnect kit for tanks 12" and larger | 1    |
| 1        | CV3151    | Nut, 1" QC                                | 4    |
| 2        | CV3150    | Split ring                                | 4    |
| 3        | CV3105    | O-ring 215                                | 4    |
| 4        | CV3352    | 1-1/4" & 1-1/2" PVC solvent fitting       | 4    |
| 5        | CV4052    | Pipe, PVC SCH 80 1-1/4" x 20"             | 2    |

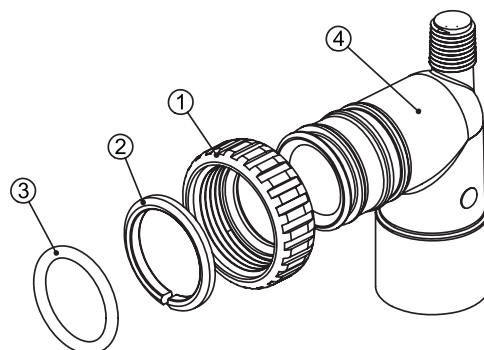
## INSTALLATION FITTING ASSEMBLIES

**NOTE:** Not all available fittings are displayed below. Contact manufacturer for optional fittings.



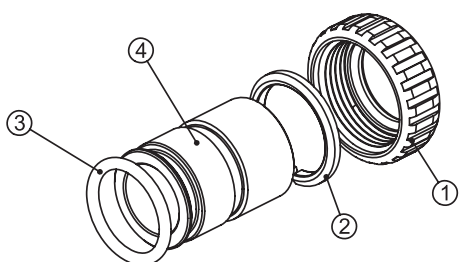
**1" PVC MALE NPT ELBOW**

| Item No. | Part No. | Description                    | Qty. |
|----------|----------|--------------------------------|------|
|          | CV3007   | 1" PVC male NPT elbow assembly | 2    |
| 1        | CV3151   | Nut, 1" quick connect          | 2    |
| 2        | CV3150   | Split ring                     | 2    |
| 3        | CV3105   | O-ring 215                     | 2    |
| 4        | CV3149   | Fitting                        | 2    |



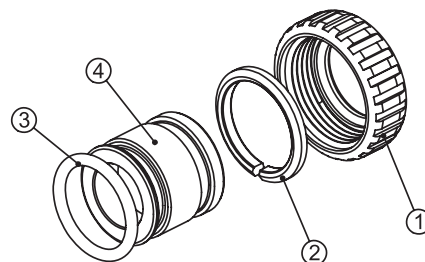
**3/4" & 1" PVC SOLVENT ELBOW**

| Item No. | Part No.  | Description                          | Qty. |
|----------|-----------|--------------------------------------|------|
|          | CV3007-01 | 3/4" & 1" PVC solvent elbow assembly | 2    |
| 1        | CV3151    | Nut, 1" quick connect                | 2    |
| 2        | CV3150    | Split ring                           | 2    |
| 3        | CV3105    | O-ring 215                           | 2    |
| 4        | CV3189    | Fitting                              | 2    |



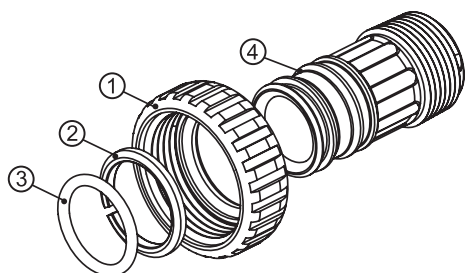
**1" BRASS SWEAT**

| Item No. | Part No.  | Description             | Qty. |
|----------|-----------|-------------------------|------|
|          | CV3007-02 | 1" brass sweat assembly | 2    |
| 1        | CV3151    | Nut, 1" quick connect   | 2    |
| 2        | CV3150    | Split ring              | 2    |
| 3        | CV3105    | O-ring 215              | 2    |
| 4        | CV3188    | Fitting                 | 2    |



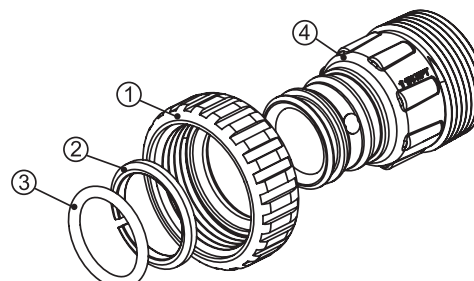
**3/4" BRASS SWEAT**

| Item No. | Part No.  | Description               | Qty. |
|----------|-----------|---------------------------|------|
|          | CV3007-03 | 3/4" brass sweat assembly | 2    |
| 1        | CV3151    | Nut, 1" quick connect     | 2    |
| 2        | CV3150    | Split ring                | 2    |
| 3        | CV3105    | O-ring 215                | 2    |
| 4        | CV3188-01 | Fitting                   | 2    |



**1" PLASTIC MALE NPT**

| Item No. | Part No.  | Description                  | Qty. |
|----------|-----------|------------------------------|------|
|          | CV3007-04 | 1" plastic male NPT assembly | 2    |
| 1        | CV3151    | Nut, 1" quick connect        | 2    |
| 2        | CV3150    | Split ring                   | 2    |
| 3        | CV3105    | O-ring 215                   | 2    |
| 4        | CV3164    | Fitting                      | 2    |

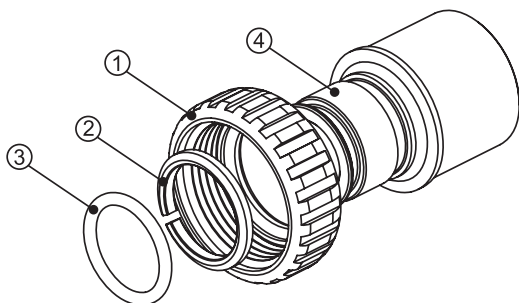


**1-1/4" PLASTIC MALE**

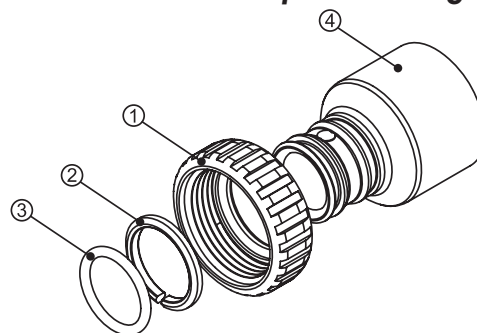
| Item No. | Part No.  | Description                  | Qty. |
|----------|-----------|------------------------------|------|
|          | CV3007-05 | 1-1/4" plastic male assembly | 2    |
| 1        | CV3151    | Nut, 1" quick connect        | 2    |
| 2        | CV3150    | Split ring                   | 2    |
| 3        | CV3105    | O-ring 215                   | 2    |
| 4        | CV3317    | Fitting                      | 2    |

## INSTALLATION FITTING ASSEMBLIES

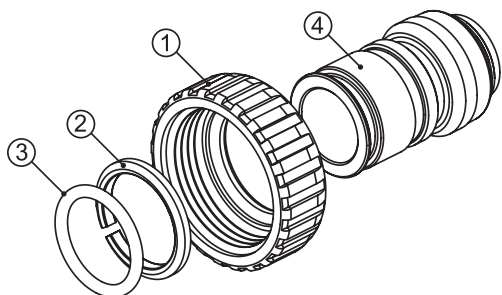
**NOTE:** Not all available fittings are displayed below. Contact manufacturer for optional fittings.



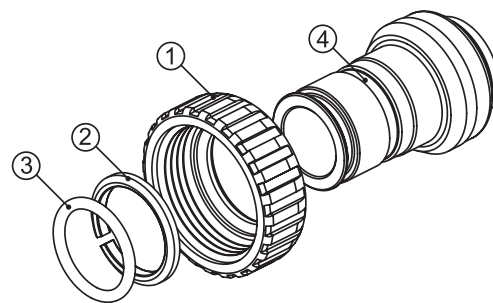
| 1-1/4" & 1-1/2" BRASS SWEAT |           |                                     |      |  |
|-----------------------------|-----------|-------------------------------------|------|--|
| Item No.                    | Part No.  | Description                         | Qty. |  |
|                             | CV3007-09 | 1-1/4 & 1-1/2" brass sweat assembly | 2    |  |
| 1                           | CV3151    | Nut, 1" quick connect               | 2    |  |
| 2                           | CV3150    | Split ring                          | 2    |  |
| 3                           | CV3105    | O-ring 215                          | 2    |  |
| 4                           | CV3375    | Fitting                             | 2    |  |



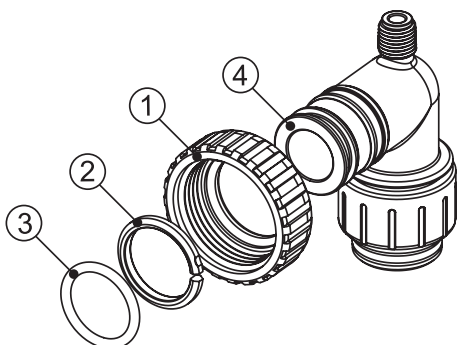
| 1-1/4" & 1-1/2" PVC SOLVENT |           |                                      |      |  |
|-----------------------------|-----------|--------------------------------------|------|--|
| Item No.                    | Part No.  | Description                          | Qty. |  |
|                             | CV3007-07 | 1-1/4" & 1-1/2" PVC solvent assembly | 2    |  |
| 1                           | CV3151    | Nut, 1" quick connect                | 2    |  |
| 2                           | CV3150    | Split ring                           | 2    |  |
| 3                           | CV3105    | O-ring 215                           | 2    |  |
| 4                           | CV3352    | Fitting                              | 2    |  |



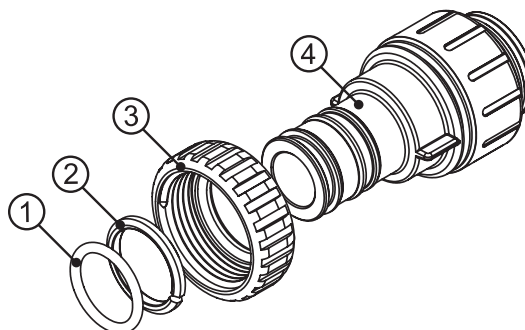
| 3/4" BRASS SHARK BITE |           |                                |      |  |
|-----------------------|-----------|--------------------------------|------|--|
| Item No.              | Part No.  | Description                    | Qty. |  |
|                       | CV3007-12 | 3/4" brass Shark Bite assembly | 2    |  |
| 1                     | CV3151    | Nut, 1" quick connect          | 2    |  |
| 2                     | CV3150    | Split ring                     | 2    |  |
| 3                     | CV3105    | O-ring 215                     | 2    |  |
| 4                     | CV3628    | Fitting                        | 2    |  |



| 1" BRASS SHARK BITE |           |                              |      |  |
|---------------------|-----------|------------------------------|------|--|
| Item No.            | Part No.  | Description                  | Qty. |  |
|                     | CV3007-13 | 1" brass Shark Bite assembly | 2    |  |
| 1                   | CV3151    | Nut, 1" quick connect        | 2    |  |
| 2                   | CV3150    | Split ring                   | 2    |  |
| 3                   | CV3105    | O-ring 215                   | 2    |  |
| 4                   | CV3629    | Fitting                      | 2    |  |



| 3/4" JOHN GUEST ELBOW |           |                                |      |  |
|-----------------------|-----------|--------------------------------|------|--|
| Item No.              | Part No.  | Description                    | Qty. |  |
|                       | CV3007-15 | 3/4" John Guest elbow assembly | 2    |  |
| 1                     | CV3151    | Nut, 1" quick connect          | 2    |  |
| 2                     | CV3150    | Split ring                     | 2    |  |
| 3                     | CV3105    | O-ring 215                     | 2    |  |
| 4                     | CV3790    | Fitting                        | 2    |  |



| 1" JOHN GUEST |           |                        |      |  |
|---------------|-----------|------------------------|------|--|
| Item No.      | Part No.  | Description            | Qty. |  |
|               | CV3007-17 | 1" John Guest assembly | 2    |  |
| 1             | CV3151    | Nut, 1" quick connect  | 2    |  |
| 2             | CV3150    | Split ring             | 2    |  |
| 3             | CV3105    | O-ring 215             | 2    |  |
| 4             | CV4045    | Fitting                | 2    |  |

# UF SERIES SPECIFICATIONS:

## Operating Specifications

|   |           |
|---|-----------|
| Filtration Level (micron)                         | 0.02      |
| <sup>1</sup> Peak Flow Rate (at 77° F and 60 psi) | 12 gpm    |
| Continuous Flow Rate                              | 10 gpm    |
| Water Pressure Range (psi)                        | 10-100    |
| Water Temperature                                 | 35-100° F |
| Electrical Requirements (V/Hz)                    | 100V/60Hz |
| Pipe Size   | 1"        |
| Total Dimensions (inches):                        |           |
| Media Tank  | 8"x44"    |

<sup>1</sup>Flow rates depend upon pressure, temperature, and suspended solids being removed.

## Application Specifications

|                                 |           |
|---------------------------------|-----------|
| Pre-filtration (micron)         | 5         |
| Chlorine (ppm, continuous flow) | 1         |
| Iron, ppm                       | <0.3      |
| Manganese, ppm                  | 0.05      |
| pH                              | 3-11      |
| Tannin                          | Variable* |

\*Molecular weights of tannins vary greatly. It is important that the filtration level be demonstrated prior to installation.

**NOTE:** This product is not certified as a microbiological purifier and should not be applied as a stand-alone disinfection solution for microbiologically unsafe water.





## UF SERIES Limited Warranty

Congratulations. You have purchased one of the finest water treatment systems available. In the unlikely event of a problem due to defects in material and workmanship, we proudly warrant our water filters to the original owner, when installed in accordance with Water-Right® specifications. This warranty is effective from the date of original installation for:

**A period of FIVE YEARS:**

**WATER-RIGHT INC. warrants its controller and valve assembly to be free of defects in material and workmanship.**

**A period of THREE YEARS:**

**WATER-RIGHT INC. warrants its UF membrane tank to be free of defects in material and workmanship.**

This warranty does not cover any equipment purchased for use in applications in which the product is not suited. It is the responsibility of the buyer to determine if a product is suitable for a particular application.

Our obligations under this warranty are limited to the repair or replacement (at WATER-RIGHT's sole discretion) of the failed parts of the water treatment unit manufactured by WATER-RIGHT, and we assume no liability whatsoever for direct, indirect, incidental, consequential, special, general or other damages.

We assume no liability for the determination of the proper equipment necessary to meet your requirements, and we do not authorize others to assume such obligations for us.

We assume no liability and extend no warranties, expressed or implied, for the use of this product with a non-potable water source or a water source which does not meet the conditions for use described in the owner's guide or performance data sheet for the product.

The warranty provided herein applies, only when used within the product specifications and service life, from the date of installation, beyond which WATER-RIGHT INC. is absolved of any and all liability for any use of the product. There are no other warranties, either of merchantability or fitness, either expressed or implied.

This warranty gives you specific legal rights and you may also have other rights which vary from state to state

**THIS WARRANTY EXCLUDES THE FOLLOWING:**

- Damage caused by improper installation, operation or care.
- Damage caused by chemical attack, environment, accident, fire, flood, freezing, Act of God, misuse, misapplication, neglect, oxidizing agents (such as chlorine, ozone, chloramines and other related components), alteration, installation or operation contrary to the printed instructions, or by the use of accessories or components which do not meet WATER-RIGHT's specifications, including the use of a replacement element not manufactured or supplied by WATER-RIGHT INC. Refer to the specifications section in the Installation and Operating manual for approved application parameters.
- Modification or alteration by other than WATER-RIGHT INC. employees.
- Rubber type parts and normal wear items i.e. "O" rings, etc...
- Any costs of labor or expenses expended in the removal and/or installation of unit, or any surrounding device.
- Altering or removing the WATER-RIGHT INC. information label.
- Use of non WATER-RIGHT INC. approved cartridges, filters, or replacement parts with the appropriate systems or vessels.
- Non-use of supported piping for plumbing connections to In/Out connections.

Service under this warranty is to be provided by the distributor/installer who sold the unit to the user. If the distributor is unable to provide warranty service, contact:

**Water-Right, Inc.**  
**1900 Prospect Court • Appleton, WI 54914**  
**Toll Free: 800-777-1426 • Fax: 920-739-9406**

A Returned Goods Authorization (RGA) number must be received from the above office and placed on all shipments to and correspondence with WATER-RIGHT INC.

Please be prepared with the following information:

1. Model number and serial number.
2. Date of installation.
3. Name of installer
4. Nature of problem.
5. Your address and contact information.



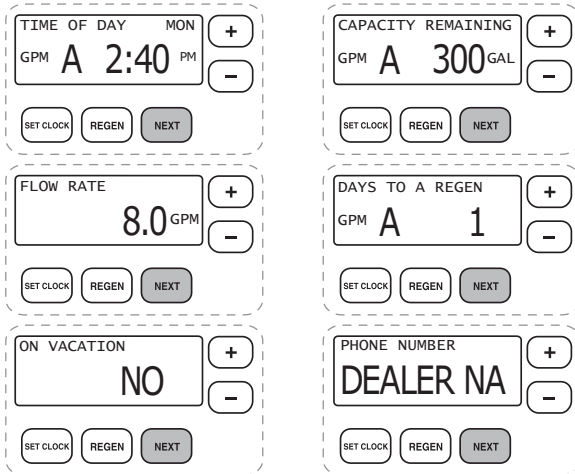
# QUICK REFERENCE GUIDE:

## GENERAL OPERATION

When the system is operating, one of six displays will be shown:

1. time of day/gpm
2. flow rate
3. vacation mode
4. capacity remaining
5. days to a regen
6. dealer name and phone number

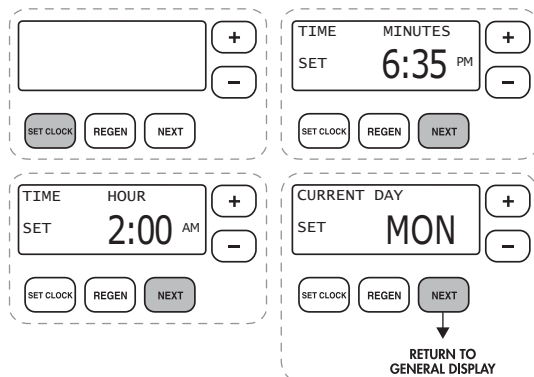
Pressing **NEXT** will toggle between the six choices.



## TO SET TIME OF DAY

In the event of a prolonged power outage, time of day flashes, indicating that this needs to be reset. All other information will be stored in memory no matter how long the power outage.

1. Accessed by pressing **SET CLOCK**
2. Adjust hours with **+** and **-** buttons, AM/PM toggles at 12
3. Press **NEXT**
4. Adjust minutes with **+** and **-** buttons
5. Press **NEXT**
6. Adjust current day with **+** and **-** buttons
7. Press **NEXT** to complete and return to normal operation



## MANUAL REGENERATION

**NOTE:** For UF filters with optional chlorine generator, if brine tank does not contain salt, fill with salt and wait at least two hours before regeneration. If you need to initiate a manual regeneration, either immediately, or the same night at the preprogrammed time for regeneration (typically 2:00 AM), complete the following steps.

REGEN TODAY and TIME OF DAY will flash alternately if a regeneration is expected tonight.



### For Immediate Regeneration:

Press and hold **REGEN** until valve motor starts (typically 3 seconds).

### For Regeneration the same night:

Press and release **REGEN** (notice that flashing "REGEN TODAY" appears).

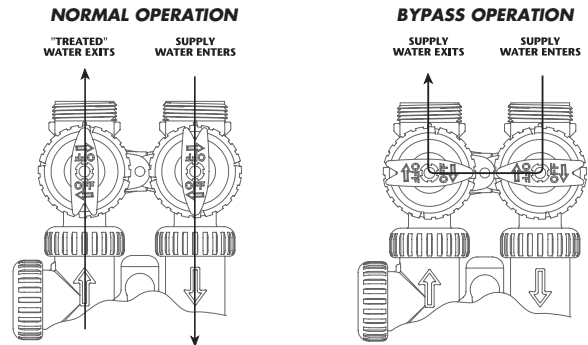
## ERROR

If the display toggles between "Error" and an error code (i.e. a number), call a service technician and report the error code.



## BYPASS VALVE OPERATION

To shut off water to the system, position arrow handles as shown in the bypass operation diagram below. If your valve doesn't look like the diagram below, contact your service technician for instructions on how to shut off water.





## QUICK REFERENCE GUIDE:

### ADJUST TIME, DAYS BETWEEN REGENERATION, TIME OF REGENERATION AND ALARM Buzzer (Optional)

For initial set-up or to make adjustments, please complete the following steps.

1. Accessed by pressing **NEXT** and **+** button simultaneously
2. Adjust hardness using **+** and **-** buttons
3. Press **NEXT**
4. Adjust days between regenerations using **+** and **-** buttons
5. Press **NEXT**
6. Adjust time of regeneration hour with **+** and **-** buttons, AM/PM toggles at 12.
7. Press **NEXT**
8. Adjust time of regeneration minutes with **+** and **-** buttons
9. Press **NEXT**
10. Turn service alarm time ON with **+** and **-** buttons. Default is OFF.
11. Press **NEXT** twice
12. Turn service alarm gallons ON with **+** and **-** buttons. Default is OFF.
13. Press **NEXT** twice
14. Turn alarm buzzer ON or OFF with **+** and **-** buttons.
15. Press **NEXT**
16. Adjust alarm buzzer start time with **+** and **-** buttons.
17. Press **NEXT**
18. Adjust alarm buzzer end time with **+** and **-** buttons.
19. Press **NEXT**
20. Turn display backlight ON or OFF with **+** and **-** buttons. Default is ON.
21. Press **NEXT** to complete and return to normal operation.

|   |   |
|---|---|
| <div> <div></div> <div>+</div> <div>-</div> </div> <div>SET CLOCK REGEN NEXT</div>  | <div> <div>SERVICE ALARM GAL</div> <div>SET OFF</div> <div>+</div> <div>-</div> </div> <div>SET CLOCK REGEN NEXT</div>                                  |
| <div> <div>WATER HARDNESS</div> <div>SET 20 GR</div> <div>+</div> <div>-</div> </div> <div>SET CLOCK REGEN NEXT</div>       | <div> <div>SERVICE ALARM TIME</div> <div>SET OFF</div> <div>+</div> <div>-</div> </div> <div>SET CLOCK REGEN NEXT</div>                                 |
| <div> <div>REGENS PER DAY</div> <div>SET 1 PER</div> <div>+</div> <div>-</div> </div> <div>SET CLOCK REGEN NEXT</div>       | <div> <div>ALARM BUZZER START</div> <div>SET 6:00 AM</div> <div>+</div> <div>-</div> </div> <div>SET CLOCK REGEN NEXT</div>                             |
| <div> <div>REGEN TIME HOUR</div> <div>SET 2:00 AM</div> <div>+</div> <div>-</div> </div> <div>SET CLOCK REGEN NEXT</div>    | <div> <div>ALARM BUZZER END</div> <div>SET 8:00 PM</div> <div>+</div> <div>-</div> </div> <div>SET CLOCK REGEN NEXT</div>                               |
| <div> <div>REGEN TIME MINUTES</div> <div>SET 2:00 AM</div> <div>+</div> <div>-</div> </div> <div>SET CLOCK REGEN NEXT</div> | <div> <div>LIGHT NORMALLY</div> <div>SET ON</div> <div>+</div> <div>-</div> </div> <div>SET CLOCK REGEN NEXT</div> <div>RETURN TO GENERAL DISPLAY</div> |

## NOTES

## NOTES



1900 Prospect Court • Appleton, WI 54914  
Phone: 920-739-9401 • Fax: 920-739-9406